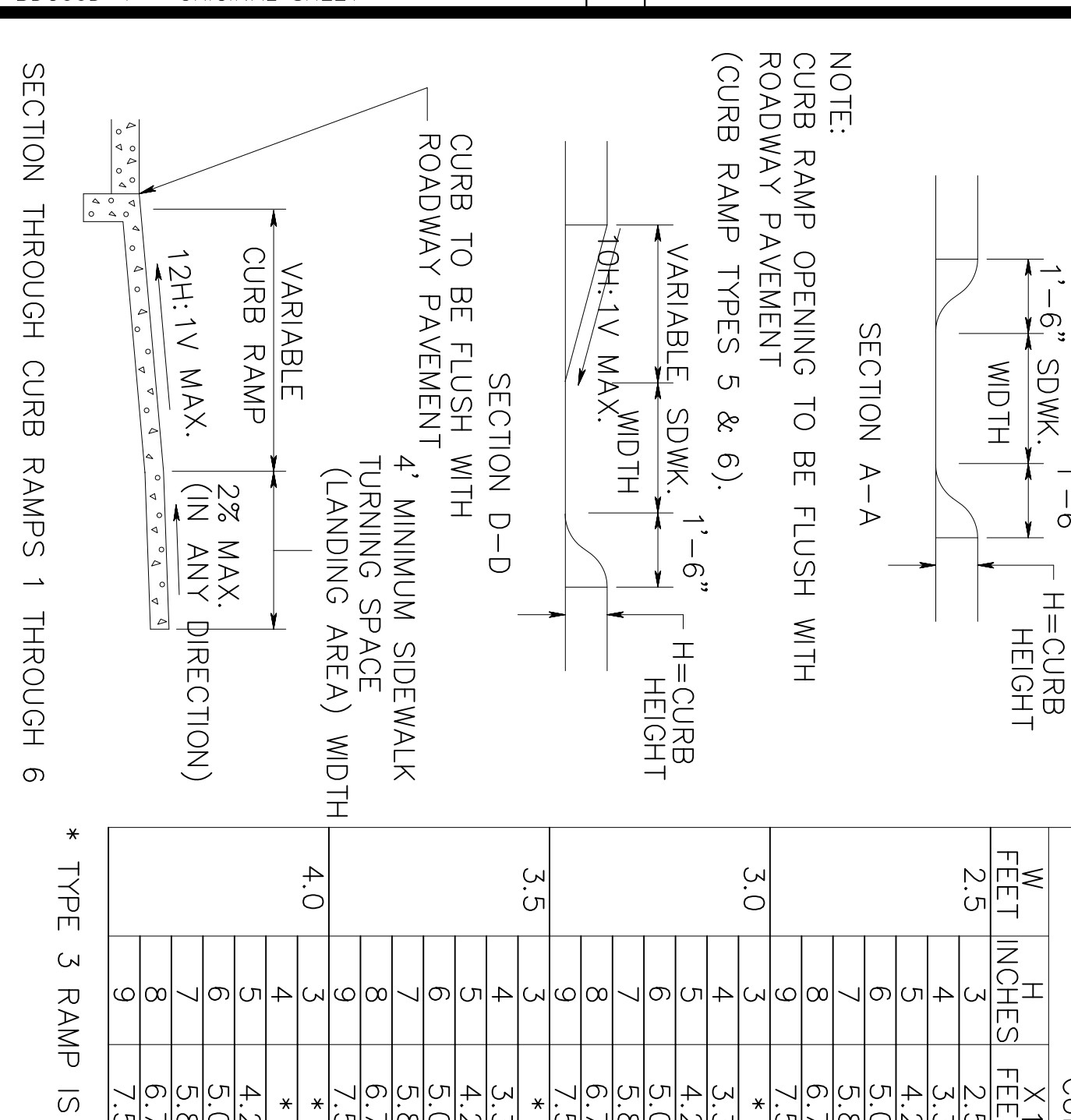


CURB RAMP TYPE 1					
W	H	X1	L1	Y	L2
FEET	INCHES	FEET	FEET	FEET	FEET
2.5	3	2.5	9	2.5	5
3	3	3.3	10.6	1.5	7
4	4.2	4.2	12.4	2.5	9
5	5.0	5.0	14.0	3.0	11
6	5.8	5.8	15.6	3.5	13
7	6.7	6.7	17.4	4.5	15
8	7.5	7.5	19.0	5.5	17
9	8.3	8.3	20.6	6.5	19

CURB RAMP TYPE 2					
W	H	X1	L1	Y	L2
FEET	INCHES	FEET	FEET	FEET	FEET
2.5	3	2.5	9	2.5	5
3	3	3.3	10.6	1.5	7
4	4.2	4.2	12.4	2.5	9
5	5.0	5.0	14.0	3.0	11
6	5.8	5.8	15.6	3.5	13
7	6.7	6.7	17.4	4.5	15
8	7.5	7.5	19.0	5.5	17
9	8.3	8.3	20.6	6.5	19

CURB RAMP TYPE 3					
W	H	X1	L1	Y	L2
FEET	INCHES	FEET	FEET	FEET	FEET
2.5	3	2.5	9	2.5	5
3	3	3.3	10.6	1.5	7
4	4.2	4.2	12.4	2.5	9
5	5.0	5.0	14.0	3.0	11
6	5.8	5.8	15.6	3.5	13
7	6.7	6.7	17.4	4.5	15
8	7.5	7.5	19.0	5.5	17
9	8.3	8.3	20.6	6.5	19

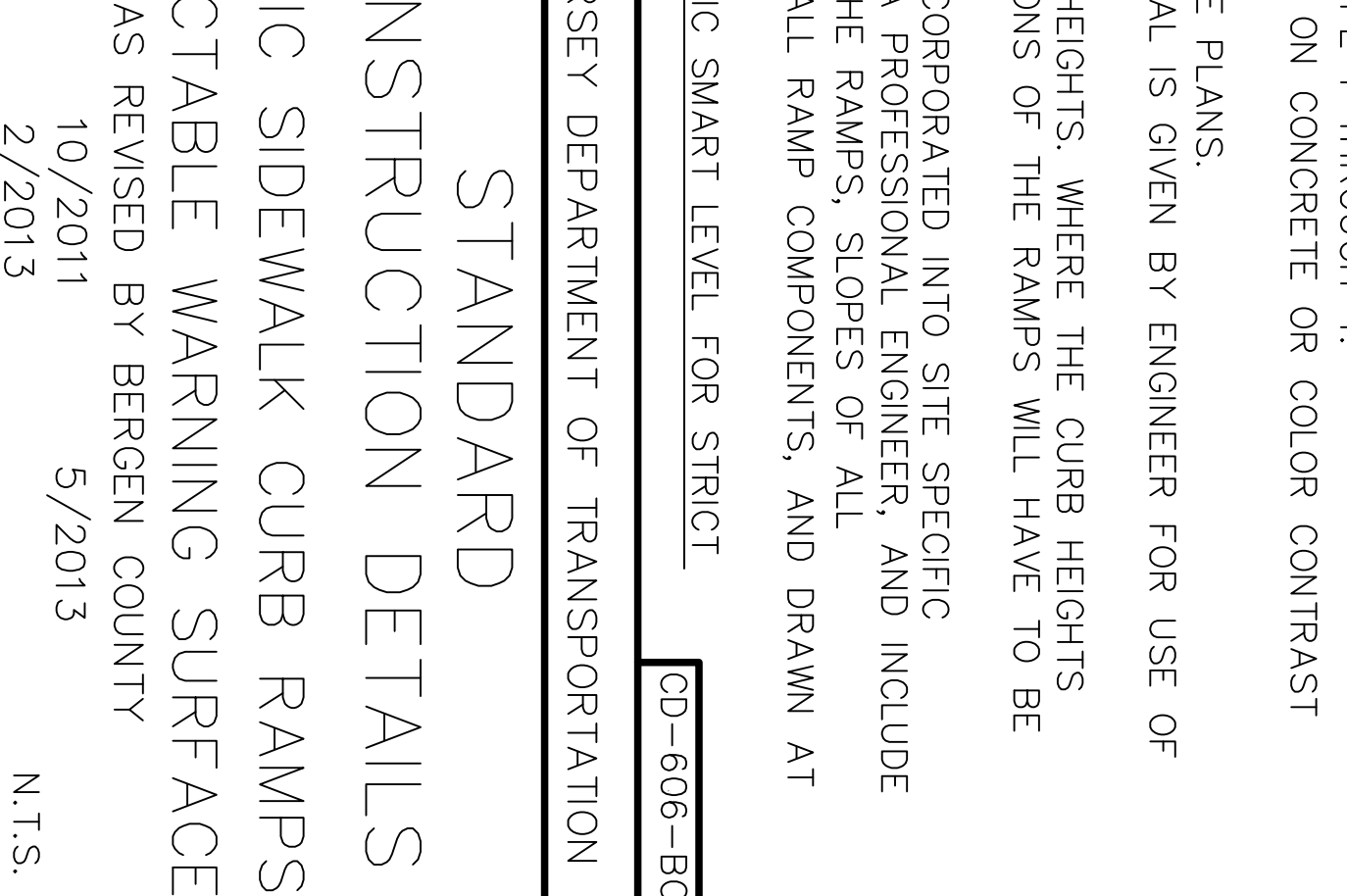
CURB RAMP TYPE 4					
W	H	X1	L1	Y	L2
FEET	INCHES	FEET	FEET	FEET	FEET
2.5	3	2.5	9	2.5	5
3	3	3.3	10.6	1.5	7
4	4.2	4.2	12.4	2.5	9
5	5.0	5.0	14.0	3.0	11
6	5.8	5.8	15.6	3.5	13
7	6.7	6.7	17.4	4.5	15
8	7.5	7.5	19.0	5.5	17
9	8.3	8.3	20.6	6.5	19



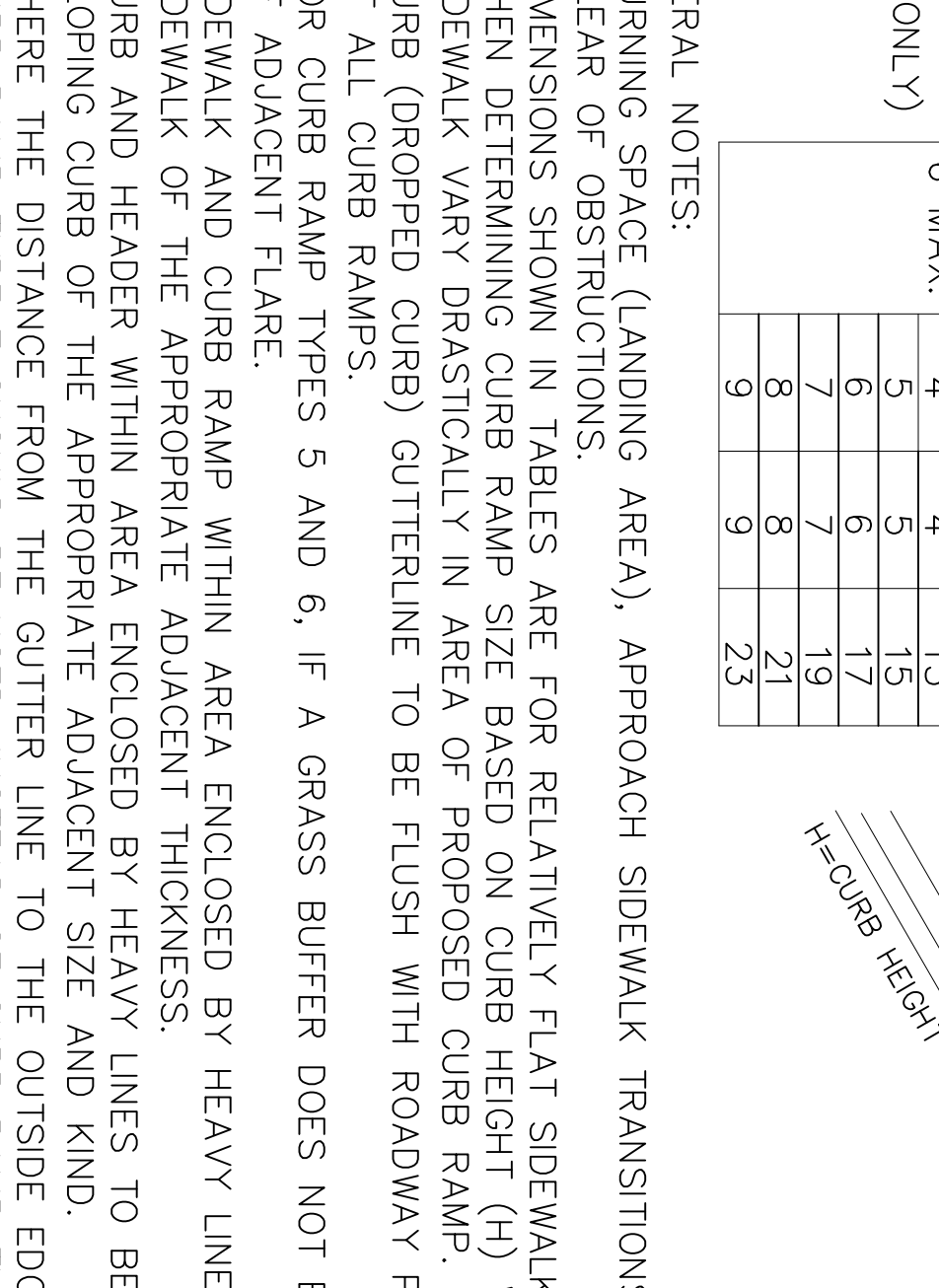
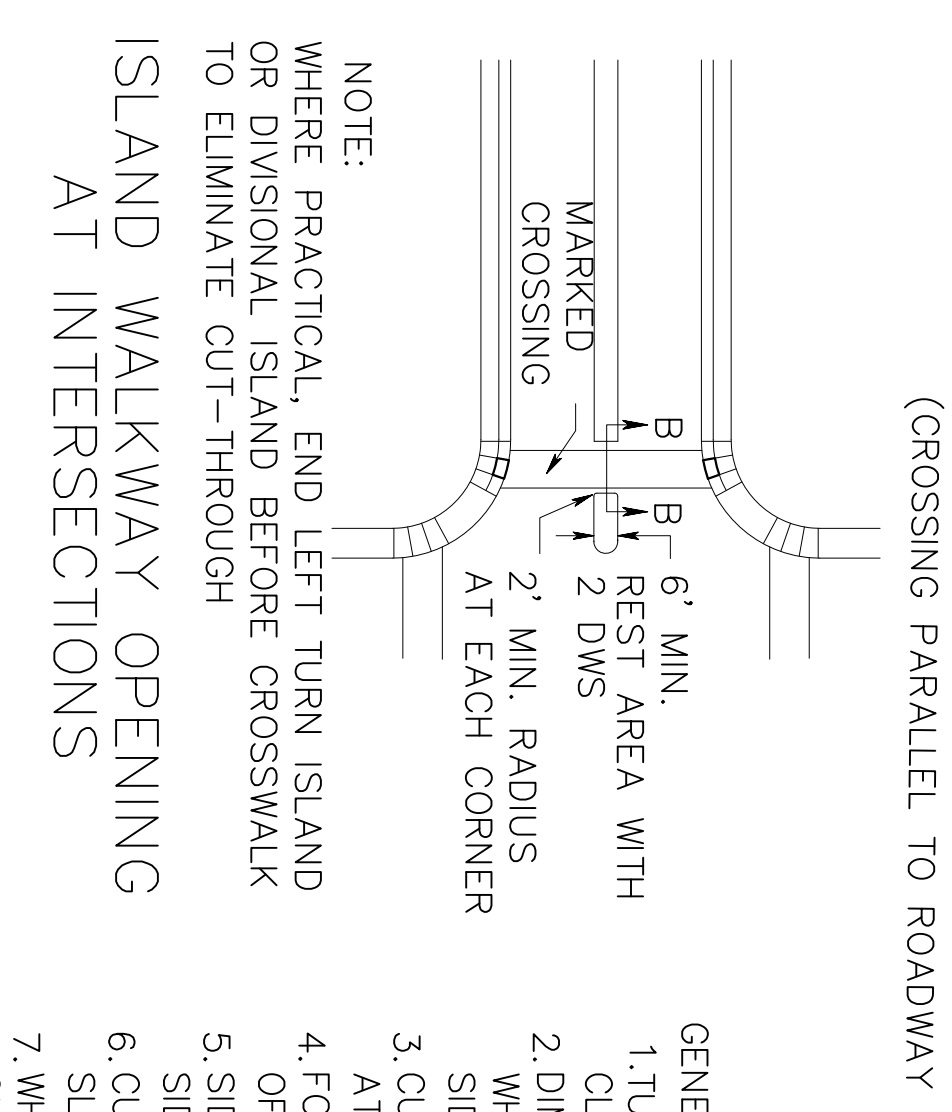
CURB RAMP TYPE 5					
W	H	X1	L1	Y	L2
FEET	INCHES	FEET	FEET	FEET	FEET
2.5	3	2.5	9	2.5	5
3	3	3.3	10.6	1.5	7
4	4.2	4.2	12.4	2.5	9
5	5.0	5.0	14.0	3.0	11
6	5.8	5.8	15.6	3.5	13
7	6.7	6.7	17.4	4.5	15
8	7.5	7.5	19.0	5.5	17
9	8.3	8.3	20.6	6.5	19

CURB RAMP TYPE 6					
W	H	X1	L1	Y	L2
FEET	INCHES	FEET	FEET	FEET	FEET
2.5	3	2.5	9	2.5	5
3	3	3.3	10.6	1.5	7
4	4.2	4.2	12.4	2.5	9
5	5.0	5.0	14.0	3.0	11
6	5.8	5.8	15.6	3.5	13
7	6.7	6.7	17.4	4.5	15
8	7.5	7.5	19.0	5.5	17
9	8.3	8.3	20.6	6.5	19

CURB RAMP TYPE 7					
W	H	X1	L1	Y	L2
FEET	INCHES	FEET	FEET	FEET	FEET
4 MIN.	3	4	4	13	6 MAX.
	5	5	5	15	
	6	6	6	17	
	7	7	7	19	
	8	8	8	21	
	9	9	9	23	



NOTE: CURB RAMP OPENING TO BE FLUSH WITH ROADWAY PAVEMENT (CURB RAMP TYPES 5 & 6).
 SECTION A-A
 SECTION D-D
 SECTION C-C



NOTE: WHERE PRACTICAL, END LEFT TURN ISLAND OR DIVISIONAL ISLAND BEFORE CROSSWALK TO ELIMINATE CUT-THROUGH AT INTERSECTIONS

NOTE: CURB RAMP TYPES 5 AND 6, IF A GRASS BUFFER DOES NOT EXIST, SLOPE CURB TO EQUAL SLOPE OF ADJACENT FLARE.

GENERAL NOTES:
 1. TURNING SPACE (LANDING AREA), APPROACH SIDEWALK TRANSITIONS, AND CURB RAMPS SHALL BE KEPT CLEAR OF OBSTRUCTIONS.
 2. DIMENSIONS SHOWN IN TABLES ARE FOR RELATIVELY FLAT SIDEWALK AREAS. CARE SHOULD BE TAKEN WHEN DETERMINING CURB RAMP SIZE BASED ON CURB HEIGHT (H) WHERE ELEVATION OF CURB AND SIDEWALK VARY DRASTICALLY IN AREA OF PROPOSED CURB RAMP.
 3. CURB (DROPPED CURB) GUTTERLINE TO BE FLUSH WITH ROADWAY PAVEMENT A MINIMUM OF 4 FEET AT ALL CURB RAMPS.
 4. FOR CURB RAMP TYPES 5 AND 6, IF A GRASS BUFFER DOES NOT EXIST, SLOPE CURB TO EQUAL SLOPE OF ADJACENT FLARE.
 5. SIDEWALK AND CURB RAMP WITHIN AREA ENCLOSED BY HEAVY LINES TO BE PAID FOR AS CONCRETE SIDEWALK OF THE APPROPRIATE ADJACENT THICKNESS.
 6. CURB AND HEADER WITHIN AREA ENCLOSED BY HEAVY LINES TO BE PAID FOR AS VERTICAL CURB OR SLOPING CURB OF THE APPROPRIATE ADJACENT SIZE AND KIND.
 7. WHERE THE DISTANCE FROM THE GUTTER LINE TO THE OUTSIDE EDGE OF SIDEWALK IS 6 FEET OR LESS, CURB RAMP TYPE 7 SHOULD BE USED, INSTEAD OF CURB RAMP TYPE 1 THROUGH 4.
 8. THE DETECTABLE WARNING SURFACE SHALL BE SAFETY RED COLOR ON CONCRETE OR COLOR CONTRAST FOR OTHER SURFACE SUCH AS BRICK.
 9. GROSSWALKS AND STOP LINES MAY BE MARKED OR UNMARKED, SEE PLANS.
 10. PREFERRED TREATMENT SHOULD ALWAYS BE USED UNLESS APPROVAL IS GIVEN BY ENGINEER FOR USE OF ALTERNATE TREATMENT.
 11. DIMENSIONS SHOWN IN TABLES ARE FOR 3 INCH TO 9 INCH CURB HEIGHTS. WHERE THE CURB HEIGHTS ARE OTHER THAN WHAT IS PROVIDED IN THE TABLES, THE DIMENSIONS OF THE RAMPS WILL HAVE TO BE CALCULATED BASED ON CROSS SLOPES SHOWN.
 12. THESE STANDARD CONSTRUCTION DETAILS ARE REQUIRED TO BE INCORPORATED INTO SITE SPECIFIC CONSTRUCTION DETAILS FOR EACH RAMP LOCATION, DESIGNED BY A PROFESSIONAL ENGINEER, AND INCLUDE THE FOLLOWING: SPOT ELEVATIONS AT ALL KEY LOCATIONS WITHIN THE RAMPS, SLOPES OF ALL SURFACES WITHIN AND ADJACENT TO THE RAMPS, DIMENSIONS OF ALL RAMP COMPONENTS, AND DRAWN AT A SCALE ACCEPTABLE TO BERGEN COUNTY.
 13. ALL INSTALLED CURB RAMPS WILL BE CHECKED WITH AN ELECTRONIC SMART LEVEL FOR STRICT COMPLIANCE WITH REQUIRED SLOPES. PAYMENT WILL NOT BE MADE FOR RAMPS NOT IN COMPLIANCE.
 14. IF 5' DEPTH ON TURNING SPACE IS NOT ACHIEVABLE, APPROVAL NEEDED FROM COUNTY FOR REDUCED SIZE (4' MINIMUM).
 15. FOR ANY SIDEWALK OR CURB RAMP, SLOPE PERPENDICULAR TO TRAVEL DIRECTION SHALL BE A MAXIMUM OF 2%.

SECTION THROUGH CURB RAMPS 1 THROUGH 6

* TYPE 3 RAMP IS NOT APPLICABLE, USE TYPE 1.
 ** TYPE 4 RAMP IS NOT APPLICABLE, USE TYPE 2.

CD-606-BC

NEW JERSEY DEPARTMENT OF TRANSPORTATION
 STANDARD
 CONSTRUCTION DETAILS
 PUBLIC SIDEWALK CURB RAMPS
 DETECTABLE WARNING SURFACE
 AS REVISED BY BERGEN COUNTY
 10/2011 5/2013
 N.T.S.