

EARLY VOTING

INSTRUCTIONS FOR VOTERS

1. To make the selection of your choice, press the box/cell containing that choice; the voting target to the right of your choice will fill with a black oval.
2. To change a selection, press the box/cell marked with a vote to deselect it. The black oval will be removed, and you may make a new selection.
3. If you wish to cast a WRITE-IN vote, go to the 'Personal Choice' column and press the box/cell within the contest containing the word 'Write-In.' Using the keyboard displayed, enter your write-in choice, one letter at a time. To make a correction, press the 'Delete' or 'Clear all' buttons, and re-enter your write-in choice. Once you are satisfied with your write-in choice, press the 'Confirm' button to record and display your choice. Verify your write-in choice is in the correct contest. Repeat this step for any contests you would like to cast a write-in personal choice for.
4. If the ballot is double-sided, press the 'Next' button located at the bottom right corner of the screen to view the backside of the ballot for any additional contests.
5. After you have made all your selections, press the 'Review' button located at the bottom right corner of the screen. Take this opportunity to complete a final review of your selections. If you would like to make a correction, press the 'Back to ballot' button located at the bottom left corner to return to the ballot and change your selections. If you are satisfied with your selections, press the 'Print' button at the bottom right corner. Press the 'Print your ballot' button to print your ballot with the selections of your choice.
6. Wait until your ballot has completed printing before taking it from the printer! Double-sided ballots require two passes to complete printing.
7. Remove your voter card and retrieve your ballot from the printer. Take the ballot to the tabulator for scanning and return the voter card to the Election Official.

INSTRUCCIONES PARA LOS VOTANTES

1. Para escoger la selección de su opción, presione la casilla que contiene esa opción; el objetivo de votación a la derecha de su selección se llenará con un óvalo negro.
2. Para cambiar una selección, presione la casilla marcada con un voto para anular la selección. El óvalo negro se eliminará, y podrá hacer una nueva selección.
3. Si desea emitir un voto WRITE-IN (un voto donde usted escribe el nombre de la persona a la cual desea proponer para ese puesto), vaya a la columna 'Elección personal' y presione la casilla dentro de la selección que contiene la palabra 'Write-In.' Usando el teclado que se muestra, ingrese su selección entrando una letra a la vez. Para hacer una corrección, presione los botones 'Eliminar' o 'Borrar todo' y vuelva a ingresar su opción por escrito. Una vez que esté satisfecho con su selección, presione el botón 'Confirmar' para grabar y mostrar su selección. Verifique que su selección esté en el participante correcto. Repita este paso para cualquier otro participante para el cual le gustaría lanzar una elección personal por escrito.
4. Si la balota tiene información por ambos lados, presione el botón 'Siguiente' ubicado en la esquina inferior derecha de la pantalla para ver la parte de atrás de la balota para cualquier participante adicional.
5. Después de haber hecho todas sus escogencias, presione el botón 'Revisar' ubicado en la esquina inferior derecha de la pantalla. Aproveche esta oportunidad para completar una revisión final de sus selecciones. Si desea hacer una corrección, presione el botón 'Volver a la balota' ubicado en la esquina inferior izquierda para regresar a la balota y cambiar sus selecciones. Si está satisfecho con sus selecciones, presione el botón 'Imprimir' en la esquina inferior derecha. Presione el botón 'Imprimir su balota' para imprimir su balota con las selecciones que usted escogió.
6. ¡Espere hasta que su balota haya terminado de imprimirse antes de sacarla de la impresora! Las balotas impresas por ambos lados requieren dos pasadas para completar la impresión.
7. Retire su credencial de elector y saque su balota de la impresora. Lleve la balota al tabulador para escanear y devuelva la tarjeta de votante al Oficial Electoral.

유권자 설명

1. 원하는 선택을 하려면 선택 옆의 박스/셀을 누르세요. 선택 오른쪽의 타원이 검은색으로 채워집니다.
2. 선택 변경을 원하면 이미 선택한 박스/셀을 눌러 취소 하세요. 검은 타원이 사라지고 새로운 선택을 할 수 있습니다.
3. 기명 투표를 원하면 '개인 선택(Personal Choice)' 칼럼에서 투표를 원하는 선거의 '기명 투표(Write-In)' 박스/셀을 누르세요. 키보드를 사용해 한 글자씩 후보 이름을 기입하세요. 수정을 하려면 '삭제>Delete)' 또는 '전원 삭제(Clear all)' 버튼을 누른 뒤 다시 기입 하세요. 기명 투표 선택이 끝나면 '확인(Confirm)' 버튼을 눌러 선택한 후보를 기록, 전시하세요. 올바른 선거의 후보임을 확인하세요. 다른 선거의 기명 투표를 원하면 이 같은 절차를 반복하세요.
4. 투표 용지가 양면이면 오른쪽 밑에 있는 '다음(Next)' 버튼을 누른 뒤 뒷쪽 투표 용지에 명시된 선거를 확인하세요.
5. 모든 투표를 마친 뒤 오른쪽 밑에 있는 '검토(Review)' 버튼을 누르세요. 이 기회를 통해 마지막으로 투표 내용을 확인하세요. 만약 수정이 필요하면 왼쪽 밑에 있는 '투표 용지 복귀(Back to ballot)' 버튼을 누른 뒤 투표 내용을 변경하세요. 투표가 끝나면 오른쪽 밑 '인쇄(Print)' 버튼을 누르세요. '투표 용지 인쇄(Print your ballot)' 버튼을 누르면 투표 내용이 적힌 투표 용지를 인쇄합니다.
6. 프린터에 투표 용지가 완벽히 인쇄될때까지 기다리세요. 양면 투표용지는 인쇄까지 추가 시간이 필요합니다.
7. 유권자 카드를 제거한 뒤 투표용지를 프린터에서 받으세요. 직원에게 스캔을 위해 투표 용지를 전달하고 유권자 카드를 돌려주세요.

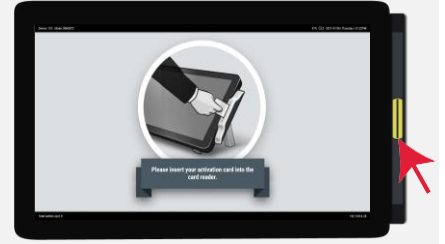


EARLY VOTING VOTING INSTRUCTIONS



1

Insert your activation card at the right of the tablet to activate your ballot. Leave the card inserted for the duration of your session.



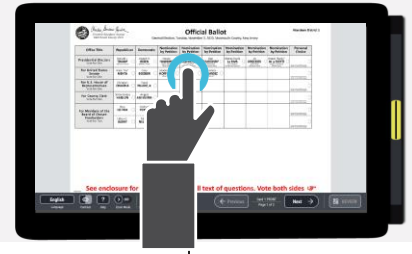
2

Instructions will appear. When ready, tap **Go to ballot** → to start your voting session.



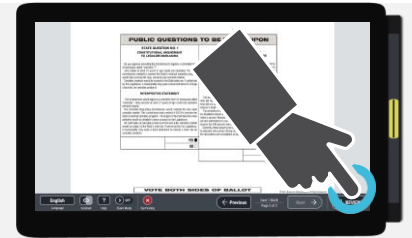
3

Make your selections by tapping the screen. Tap the **Next** → button to advance to the next page, if applicable.



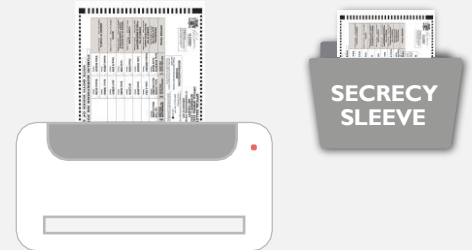
4

Once you are finished making your choices, tap the **REVIEW** button to review your choices and print your ballot.



5

Once you are satisfied with your selections, tap **Print Ballot** and your ballot will print out. If provided, place your ballot in the secrecy sleeve.



6

Take your ballot to the ImageCast® tabulator and scan your ballot. Return the activation card and secrecy sleeve, if provided, to the Poll Worker.

