



The Central Bergen Bicycle & Pedestrian Plans

Bergen County Department of Planning & Engineering
Division of Regional Planning & Transportation | May 2015

APPENDICES

Appendix A: Stakeholder and Public Comments

Appendix B: WikiMap Comments

Appendix C: Public Outreach Meetings and Summaries

Public Open House Summaries

Technical Advisory Committee Summaries

Stakeholder Outreach List



APPENDIX A

Stakeholder and Public Comments

APPENDIX A

**Central Bergen County Bicycle Pedestrian Plan
Stakeholder and Public Comments**

Town	Topic	Comment	Source	Date
Elmwood Park	Accessibility	Market St. (business dist.) bridge to GSP allow space for turnaround/loop= "midtown," going thru town not social- need to consider business	TAC Mtg #1	5/30/14
Elmwood Park	Accessibility	Market Street will be a major corridor (includes Passaic River crossing); Routing 'thru town' may be counter-productive; following the River is preferred route; there is canoe path and the falls to Dundee Dam are major attraction	TAC Mtg #1	5/30/14
Fair Lawn	Accessibility	Saddle River Rd and Fair Lawn Ave- parks goes to sidewalks with sign "Begin Bike Route;"	Public Mtg #1	6/5/14
General	Accessibility	Maple Glen Center Nursing Home Living; small- paved park access- gated; is there an easement? "share the road" sign	Field Visit	5/30/14
General	Accessibility	Williams St.- dead end; potential access point	Field Visit	5/30/14
General	Accessibility	Access point- by Sheridan fields connection not obvious- no signage; no crosswalk of Saddle River Rd.; odd intersection configuration with ½ cul-de-sac	Field Visit	5/30/14
General	Accessibility	Opportunities for more people to bike recreationally and riding to work, sense of community and evening entertainment	Public Mtg #1 / Form 2	6/5/14
General	Accessibility	Connectivity to areas outside the study area	BTCNJ Meeting	7/10/14
Maywood	Accessibility	Access from Maywood to Rochelle Park is desired	Public Mtg #1	6/5/14
Paramus	Accessibility	Pedestrian access to Bergen Town Center is desired	Public Mtg #1	6/5/14
Paramus	Accessibility	Connection to local destinations and businesses are a plus; insufficient pedestrian	TAC Mtg #1	5/30/14
Paramus	Accessibility	Garden State Plaza- need accessibility across W Passaic	Public Mtg #1	6/5/14
Paramus	Accessibility	Access to Paramus Park Mall is poor- use A+S drive	Public Mtg #1	6/5/14
Ridgewood	Accessibility	No way to get from top of park to Ridgewood	Public Mtg #1	6/5/14
Ridgewood	Accessibility	YMCA connectivity? And downtown- backstreets in north Ridgewood needs to be improved	Public Mtg #1	6/5/14
Ridgewood	Accessibility	Grove St- muni- CS policy-a park?, then to Midland Ave.--> unadvertised bike lane not	TAC Mtg #1	5/30/14
Ridgewood	Accessibility	Fair Lawn Pkwy- too wide; border to Saddle Brook very wide- must get to park thru side	TAC Mtg #1	5/30/14
Ridgewood	Accessibility	Connection to continue east-west; RR crossing in every cross 208 near ambulance cut through for kids' HS; Utility ROWs could be investigated	TAC Mtg #1	5/30/14
Rochelle Park	Accessibility	No safe way to get to path from Lodi and points south- no parking until much farther north in park and no signage for parking	Public Mtg #1	6/5/14

APPENDIX A

**Central Bergen County Bicycle Pedestrian Plan
Stakeholder and Public Comments**

Town	Topic	Comment	Source	Date
Rochelle Park	Accessibility	Near Lots ave and Knights of Columbus- opening to get to path- who owns the right of way	Public Mtg #1	6/5/14
Rochelle Park	Accessibility	Poor access at Railroad ave bridge	Public Mtg #1	6/5/14
Rochelle Park	Accessibility	Harvey st in Rochelle Park has unmarked access point	Field Visit	5/30/14
Rochelle Park	Accessibility	Dirt access path off Howard ave	Public Mtg #1	6/5/14
Rochelle Park	Accessibility	Explore use of railroad RoW as access point to park	Public Mtg #1	6/5/14
Rochelle Park	Accessibility	Railroad Ave- bottom end issue when it crosses river- narrow bridge for connectivity	Public Mtg #1	6/5/14
Rochelle Park	Accessibility	Along RR ave is opportunity to provide ramp and curb accessibility- parking space is an issue	Public Mtg #1	6/5/14
Rochelle Park	Accessibility	On Rochelle ave and houses east- need access to schools	Public Mtg #1	6/5/14
Rochelle Park	Accessibility	North Rochelle Park- 1 neighborhood on Howard ave, no access for neighborhood on other side- potential access off Forest place (swampy)	Public Mtg #1	6/5/14
Fair Lawn	Bike Route	Bike lane on Fair Lawn Ave. needed	Public Mtg #1	6/5/14
Fair Lawn	Bike Route	Fair Lawn Ave demand for bikers; bike lane may be necessary. Radburn- add off road pathway to map network, owned by municipality/restricted access at some points through Radburn. Worn path behind Thomas Edison ES- bridge to Mandon Pl, Thomas Edison school is missing from maps	Public Mtg #1	6/5/14
Fair Lawn	Bike Route	Don't like riding on Maple Avenue under Rt-208/4, potholes	Public Mtg #1 / Form 1	6/5/14
General	Bike Route	End of Berdan by 208- Railroad crossing is signed as bike lane.; Ped gates need, and bike route sign; Other side of Berdan needs to be signed as bike route	Field Visit	5/30/14
General	Bike Route	Berdan- signed as bike route to Memorial Park; very wide	Field Visit	
General	Bike Route	Want a North / South option, improve South end options, Improve River Road	Public Mtg #1 / Form 1	6/5/14
General	Bike Route	I bike/walk in Ramsey, Ridgewood, Mahwah, Franklin Lakes, Wyckoff, Allendale, Ridgewood Recreation Path, Celery Farm, Local roads, Campgnaw?, Ramapo reservation	Public Mtg #1 / Form 3	6/5/14
General	Bike Route	The Recreation Path in Ridgewood to SaddleBrook is great for running and biking all year around. Thank you to the Parks Dept for maintaining it, they do a great job of maintaining it and keeping the comfort stations open.	Public Mtg #1 / Form 3	6/5/14
General	Bike Route	Access to and from the Saddle River Park and connections to the surrounding regions, mostly north of the study area	BTCNJ Meeting	7/10/14
General	Bike Route	Saddle River Road, Saddle River Area Bike Path and Paramus Road as popular bike route among cyclists	BTCNJ Meeting	7/10/14

APPENDIX A

**Central Bergen County Bicycle Pedestrian Plan
Stakeholder and Public Comments**

Town	Topic	Comment	Source	Date
General	Bike Route	East-West Routes were identified including Glen Avenue, Linwood Avenue, Ridgewood Avenue, Grove Street, and Rock Road. Safety and desirability of riding along Ridgewood Avenue was questioned.	BTCNJ Meeting	7/10/14
Glen Rock	Bike Route	Prospect ave- bikes ride 3/4 abreast coming from Glen Rock/Fair Lawn	Public Mtg #1	6/5/14
Glen Rock	Bike Route	Rock Rd and Maple Ave unsafe- public library, access to downtown at train station; old utility Right of Way- Paterson to Mahwah- see map	Public Mtg #1	6/5/14
Glen Rock	Bike Route	Ridgewood water to provide access on utility RoW	Public Mtg #1	6/5/14
Glen Rock	Bike Route	Back streets Radburn--> Park, Allen ave, cross Prospect St	Public Mtg #1	6/5/14
Maywood	Bike Route	Plaza Way/Pleasant Ave under Rt 17- dead ends now, could provide access	Public Mtg #1	6/5/14
Maywood	Bike Route	Safe route path needed--> Bergen Town Center/ REI	Write-In	
Paramus	Bike Route	Dunkerhook connection- missing bike path- see map	Public Mtg #1	6/5/14
Ridgewood	Bike Route	Biker- "we don't use Maple or Ridgewood ave, bike on Spring st and Pleasant ave"	Public Mtg #1	6/5/14
Ridgewood	Bike Route	Berdan ends, turns up 208 is tricky, then Berdan continues	TAC Mtg #1	5/30/14
Ridgewood	Bike Route	Vandeem and Spring Ave are potential bike routes	Public Mtg #1	6/5/14
Ridgewood	Bike Route	I bike on the road in Upper Saddle River to Ridgewood	Public Mtg #1 / Form 2	6/5/14
Ridgewood	Bike Route	Complete more of the Ridgewood Rec Path and connect it to more areas. If it were connected to NYC more people would bike to work.	Public Mtg #1 / Form 3	6/5/14
Rochelle Park	Bike route	Need bike lane on Passaic st	Public Mtg #1	6/5/14
Rochelle Park	Bike Route	Look at NYS+W RoW as alternate to get under rt 17- RP--> Maywood, Central ave not safe for bikes, west of Central ave and Rochelle ave, Lots ave access point	Public Mtg #1	6/5/14
Fair Lawn	Miscellaneous	Abbott section of Fair Lawn has senior apartments	Public Mtg #1	6/5/14
Maywood	Miscellaneous	Town has plan for bike-ped (NJDOT funded)	TAC Mtg #1	5/30/14
Paramus	Miscellaneous	Dunkerhook- dead end road used as turnaround for cars exiting park which blocks bike coming off pathway	Public Mtg #1	6/5/14
Paramus	Miscellaneous	Improve bus stops and interchange conflicts on Rt 4	Public Mtg #1	6/5/14
Ridgewood	Miscellaneous	Ridgewood Ave- was supposed to be repaved; feeds duck pond	TAC Mtg #1	5/30/14
Ridgewood	Miscellaneous	Linwood ave and Vandeem- redesign? Check with county engineer	Public Mtg #1	6/5/14
Rochelle Park	Miscellaneous	Rochelle ave and Railroad ave- widening Rochelle ave near CVS- county engineer installing countdown signs; 18 ft lane and 22 ft left turn lane- town complained about inaccessibility for emergency vehicles	Public Mtg #1	6/5/14
Rochelle Park	Miscellaneous	Spillover traffic from rt 17 create congestion issues in sidestreets	Public Mtg #1	6/5/14
Rochelle Park	Miscellaneous	There is a freight rail line that is not displayed on map	TAC Mtg #1	5/30/14
Saddle Brook	Miscellaneous	Railroad ave and Saddle River rd ramp to Rt 80- signal replacement using existing equipment and adding countdowns	Public Mtg #1	6/5/14

APPENDIX A

**Central Bergen County Bicycle Pedestrian Plan
Stakeholder and Public Comments**

Town	Topic	Comment	Source	Date
Elmwood Park	Parking	Access to library is limited (parking)= higher pedestrian activity	Public Mtg #1	6/5/14
General	Parking	Dunderhook Area- path goes on roadway thru park area; parking on road?; County Rd 56- non continuous	Field Visit	5/30/14
Rochelle Park	Parking	Not enough parking in Rochelle Park area	Write-In	6/5/14
Rochelle Park	Parking	More parking to access needed trail at Rochelle Park trail head- in park	Public Mtg #1	6/5/14
Fair Lawn	Pathway	Drop off in path near Saddle River rd. between Cambridge and Lewis st.	Public Mtg #1	6/5/14
General	Pathway	Bike path is too crowded- congestion problems	Public Mtg #1	6/5/14
General	Pathway	Saddle River County Park is regional spine for multi-modal use, but not intended for high speed bike traffic	TAC Mtg #1	5/30/14
General	Pathway	No restrooms along pathway	Public Mtg #1	6/5/14
General	Pathway	Under bridge, path drops and the bump is unexpected when biking	Public Mtg #1	6/5/14
General	Pathway	Would like to see extension of path into Lodi	Public Mtg #1	6/5/14
General	Pathway	Overall need for repaving on a regular basis. Too many cracks and rough spots for safe smooth riding and walking	Write-In	6/5/14
General	Pathway	Need better and wider pathway- separate bikes and pedestrians	Write-In	6/5/14
General	Pathway	More bathrooms needed along path	Write-In	6/5/14
General	Pathway	Drop off from path needs leveling in many areas- Saddle Brook by pond and elsewhere	Write-In	6/5/14
General	Pathway	Etiquette rules at park entrances would help remind people it is a shared pathway. People need to keep to the right instead of blocking the path as if bikers have no right being there. Ditto for bikers announcing their approach to walkers and other bikers. Dog leashes should be kept short to keep leash from blocking path when dogs wander from owners.	Write-In	6/5/14
General	Pathway	Hills should be striped with direction arrows on the right sides of the striping. Hills are difficult enough without people and bikers in the middle blocking things. Hill are in Fair Lawn and at most bridges in path	Public Mtg #1	6/5/14
General	Pathway	Too many walkers use roadway instead of path	Write-In	6/5/14
General	Pathway	Not enough money in budget as impediment to pathway	Write-In	6/5/14
General	Pathway	More bike lanes that are completely marked and car barricades	Public Mtg #1 / Form 3	6/5/14
General	Pathway	In winter all the roads had potholes and so now they are freshly paved which makes riding great	Public Mtg #1 / Form 3	6/5/14

APPENDIX A

Central Bergen County Bicycle Pedestrian Plan

Stakeholder and Public Comments

Town	Topic	Comment	Source	Date
Paramus	Pathway	Paramus waterfall area has drop off from path that causes hazards to bikers and walkers. Needs to be leveled out. Also expand the paved area to allow room for people stopping at the falls needs leveling in many areas- Saddle Brook by pond and elsewhere	Write-In	6/5/14
Paramus	Pathway	Paramus parking area shares active driveway and roadway with path. Too many cars go down the middle and expect bikers and walkers to get out of the way off the pavement. Car lanes and bike/walking lanes need to be widened and segregated. Also need to block the road for the connector to Fair Lawn. Many cars to thinking it's an exit and then carelessly turn around	Write-In	6/5/14
Ridgewood	Pathway	Fence/ bump problem under Midland Ave and Grove St	Public Mtg #1	6/5/14
Ridgewood	Pathway	Underpasses at Ridgewood Ave and Midland Ave are too narrow. Drop off under fence at Ridgewood Ave is dangerous. Better signage for blind spots also needed	Write-In	6/5/14
Elmwood Park	Safety	Saddle River Rd. at Century/Fairlwan is an intersection that should be investigated to determine potential issues	TAC Mtg #1	5/30/14
Fair Lawn	Safety	Harristown Rd. and Radburn Rd. is a tough intersection- trees and bushes block visibility and hard to see cars	Public Mtg #1	6/5/14
Fair Lawn	Safety	Abbott Rd and Fair Lawn Ave- grade effects visibility of crosswalks, hard to see uphill approach; should we put signal at intersection?	Public Mtg #1	6/5/14
Fair Lawn	Safety	Saddle River Rd and Fair Lawn Ave- difficult to cross Saddle River Rd	Public Mtg #1	6/5/14
Fair Lawn	Safety	Poor pedestrian visibility Plaza Rd and High St	Public Mtg #1	6/5/14
Fair Lawn	Safety	Fair Lawn Ave and Plaza Rd need to be safer	Write-In	6/5/14
General	Safety	Lights needed on path and crosswalks	Public Mtg #1	6/5/14
General	Safety	Glen Ave crossing difficult- need signage	Public Mtg #1	6/5/14
General	Safety	Drivers don't always pay full attention, don't move over when there is no shoulder available. Not enough people choose to exercise and chose to drive when they can walk or run.	Public Mtg #1 / Form 3	6/5/14
General	Safety	Poor safety conditions and visibility along roads was key issue, participants were interested in dedicated bicycle facilities.	BTCNJ Meeting	7/10/14
General	Safety	Roadway slope and highway interchanges (particularly Ridgewood Avenue at Rt 17 and GSP) were key issues in planning for bicycle routes	BTCNJ Meeting	7/10/14
Glen Rock	Safety	Difficult to cross Prospect St at Jerome Ave	Public Mtg #1	6/5/14
Glen Rock	Safety	Rodney Rd and Harristown Rd- trees and bushes block visibility	Public Mtg #1	6/5/14
Maywood	Safety	Need improvements in walking to school bus routes and bike lanes	Write-In	6/5/14

APPENDIX A

**Central Bergen County Bicycle Pedestrian Plan
Stakeholder and Public Comments**

Town	Topic	Comment	Source	Date
Paramus	Safety	1 way loop at Dunderhook- cars, bikes, pedestrian conflict on road and pathway- need more marked bike/ pathway	Public Mtg #1	6/5/14
Paramus	Safety	Crossing on Linwood Ave in front of Stop n Shop is unsafe	Public Mtg #1	6/5/14
Paramus	Safety	Paramus rd- high speed issue; BCC is accessed along this road (not recommended route for bikes)	TAC Mtg #1	5/30/14
Paramus	Safety	Crossing of Paramus Rd is difficult; crossing to BCC and PCHS difficult	Public Mtg #1	6/5/14
Paramus	Safety	Improve Paramus rd shoulder markings	Public Mtg #1	6/5/14
Ridgewood	Safety	Crossing Ridgewood Ave near pond is dangerous	Public Mtg #1	6/5/14
Ridgewood	Safety	In front of Ridgewood library- difficulty crossing Maple ave	Public Mtg #1	6/5/14
Ridgewood	Safety	West Glen ave is difficult to cross, upper Blvd and Oak st	Public Mtg #1	6/5/14
Ridgewood	Safety	Fairlawn Ave is very busy; Fairlawn Pkwy is very wide	TAC Mtg #1	5/30/14
Ridgewood	Safety	Duck pond- Ridgewood Ave crossing difficult and lack of parking	Public Mtg #1	6/5/14
Ridgewood	Safety	5 point intersection- Godwin, Ackerman, Lincoln, Monroe- difficult to cross	Public Mtg #1	6/5/14
Ridgewood	Safety	Safe route needed from pool to HS in Ridgewood	Public Mtg #1	6/5/14
Rochelle Park	Safety	Crosswalks needed in front of Midland School- Terrace ave and Rochelle ave and Passaic st and ShopRite entrance; Terrace ave- widen sidewalk and new curbs, put bollards up to protect children	Public Mtg #1	6/5/14
Rochelle Park	Safety	Crossing Passaic st is very "psycho," hard to get to other side	Public Mtg #1	6/5/14
Rochelle Park	Safety	Narrow bridge walkway in RP and poor approach from Saddle River rd side of bridge. Needs widening and better approach	Write-In	6/5/14
Rochelle Park	Safety	Intersection of Rochelle and Central ave- traffic conflicts- see heat map	Public Mtg #1	6/5/14
Rochelle Park	Safety	Rochelle ave and Passaic ave- pedestrian mess!	Public Mtg #1	6/5/14
Rochelle Park	Safety	W Passaic st- no easy crosswalks- J walking is an issue	Public Mtg #1	6/5/14
Ridgewood	Safety Accessibility	Prospect and Alan streets- Very difficult crossin, blind corner; Connects to Ackerman- very narrow; Maxwell St- unofficial access point to pathway (Ridgewood); Alan rd- runs parallel to path; unofficial access point	Field Visit	5/30/14
Maywood	Sidewalks	Narrow sidewalks and unsafe to bike	Public Mtg #1	6/5/14
Paramus	Sidewalks	More "complete" sidewalks along Route 4	Public Mtg #1	6/5/14
Paramus	Sidewalks	Complete sidewalks needed along Rt 4	Public Mtg #1	6/5/14
Paramus	Sidewalks	Demand in Bergen Town Center- walking demand on Rt 4- bus stops and location	Public Mtg #1	6/5/14
Rochelle Park	Sidewalks	Passaic ave and Central ave need wider sidewalks	Public Mtg #1	6/5/14
Rochelle Park	Sidewalks	Essex and Rochelle ave- no sidewalks/ incomplete	Public Mtg #1	6/5/14
Rochelle Park	Sidewalks	Narrow sidewalks and unsafe to bike	Public Mtg #1	6/5/14

APPENDIX A

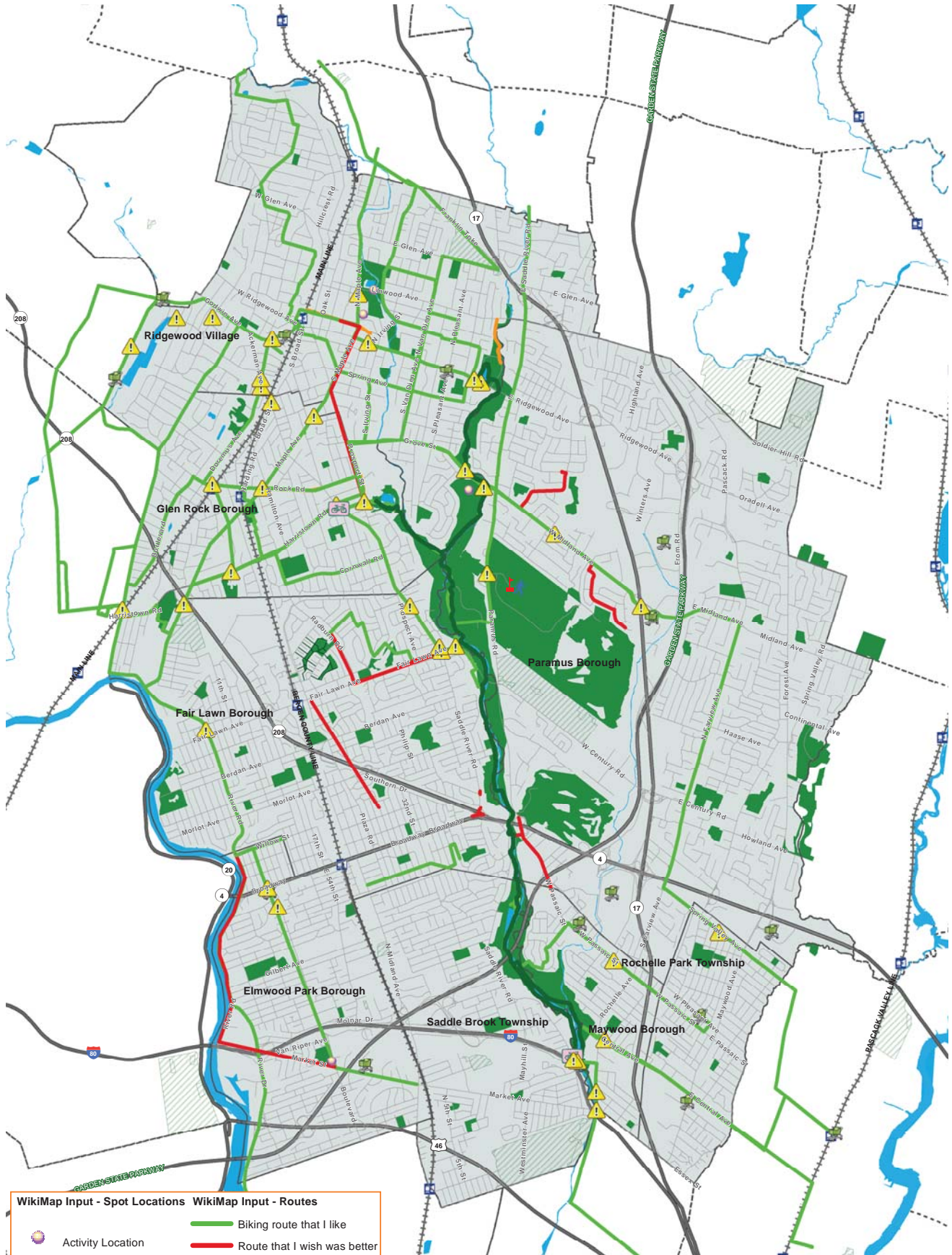
Central Bergen County Bicycle Pedestrian Plan

Stakeholder and Public Comments

Town	Topic	Comment	Source	Date
General	Signage	Saddle River Rd= "bike route path," begins--> begin signs needed	Field Visit	5/30/14
General	Signage	Branch of path comes out to Century rd. + Fair Lawn/ Saddle River rd; sign there	Field Visit	5/30/14
General	Signage	Access point just below Cambridge Ave- no sign	Field Visit	5/30/14
General	Signage	No sign path entrance on Saddle River Rd	Field Visit	5/30/14
Glen Rock	Signage	Need sign for bridge, community-->park	Public Mtg #1	6/5/14
Paramus	Signage	Dunkerhook rd and park need more signage	Public Mtg #1	6/5/14
General	Signage Accessibility	Red Mill- path under bridge, comes up and over river then dam under Rt 4; no signs; no crosswalks; access point at cornered intersections then under Rt. 4 then Saddle River Rd	Field Visit	5/30/14

APPENDIX B

WikiMap Comments



WikiMap Input - Spot Locations		WikiMap Input - Routes	
	Activity Location		Biking route that I like
	Area of Concern		Route that I wish was better
	Biking Destination		Walking route that I like
	Shopping destination		Cemetery
	Walking destination		Study Area Municipalities
			Bike Trails



APPENDIX B

Central Bergen County Bicycle Pedestrian Plan WIKIMAP COMMENTS

TOWN	TOPIC	CATEGORY	COMMENT	DATE
Elmwood Park	Accessibility	Area of Concern	from Elmwood terrace to Elmwood dr has daily parking on both sides, limiting the space for bikes	10-Jun-14
Fair Lawn	Accessibility	Area of Concern	There is no easy way to enter the park from this road, unless you ride with the traffic. No crosswalks, no sidewalks.	29-May-14
Glen Rock	Accessibility	Area of Concern	difficult to cross Prospect to enter park.	30-Apr-14
Ridgewood	Accessibility	Area of Concern	Difficult to get from pershing into the park without riding on the sidewalk	5-Jun-14
Ridgewood	Accessibility	Area of Concern	How can we get access to the north end of this trail?	9-Jun-14
Ridgewood	Accessibility	Area of Concern	Robinson Lane is a good way for kids to ride a bike from the west to Graydon or the library or Vet Field. However there is no crossing at Maple. Should put in a crossing here and join it with the other paths through the park.	7-Jun-14
Glen Rock	Accessibility	Biking route that I like	This is the best route for me. Traffic on Harristown Rd. is not bike friendly so I usually ride on the sidewalk all the way to the park.	20-May-14
Ridgewood	Accessibility	Route that I wish was better	Path access doesn't connect to new crosswalk	19-May-14
Rochelle Park	Accessibility	Route that I wish was better	Can we get a new bridge? Prefabricated?	5-Jun-14
Rochelle Park	Accessibility	Route that I wish was better	poor bike/walk connection from one side of path to the other over the Saddle River	1-May-14
Saddle Brook	Bike Route	Biking Destination	Southern limit of the Saddle River County Park path	25-Mar-14
Elmwood Park	Bike Route	Biking route that I like	Orange ave is an extension of the Boulevard to the north	9-Jun-14
Elmwood Park	Bike Route	Biking route that I like	This is the widest and safest road through Elmwood park, the speed limit is 35 mph	9-Jun-14
Elmwood Park	Bike Route	Biking route that I like	Willow st is the safest route into Fair Lawn	9-Jun-14
Elmwood Park	Bike Route	Biking route that I like		10-Jun-14
Fair Lawn	Bike Route	Biking route that I like	Radburn - Saddle River County Park connection	5-Jun-14
Fair Lawn	Bike Route	Biking route that I like		29-May-14
Fair Lawn / Glen Rock / Ridgewood / Paramus	Bike Route	Biking route that I like	Shopping Route. Transit over Route 17 on Midland ave is difficult.	5-Jun-14
Glen Rock	Bike Route	Biking route that I like	frequent route	6-Jun-14
Glen Rock	Bike Route	Biking route that I like	Home to Saddle River Pathway	5-Jun-14
Glen Rock / Fair Lawn / Elmwood Park	Bike Route	Biking route that I like	Frequent route	5-Jun-14
Glen Rock / Paramus	Bike Route	Biking route that I like	Frequent Route	5-Jun-14
Glen Rock / Paramus / Maywood	Bike Route	Biking route that I like	Frequent Route	5-Jun-14
Glen Rock / Ridgewood / Paramus	Bike Route	Biking route that I like	Frequent Route	5-Jun-14

APPENDIX B

Central Bergen County Bicycle Pedestrian Plan WIKIMAP COMMENTS

TOWN	TOPIC	CATEGORY	COMMENT	DATE
Glen Rock / Saddle River Park	Bike Route	Biking route that I like	Frequent Route	5-Jun-14
Glen Rock / Saddle River Park	Bike Route	Biking route that I like	Frequent Route	5-Jun-14
Glen Rock / Saddle River Park	Bike Route	Biking route that I like	Frequent Route	5-Jun-14
Glen Rock / Saddle River Park	Bike Route	Biking route that I like	frequent route	6-Jun-14
Glen Rock / Saddle River Park / Rochelle Park / Maywood	Bike Route	Biking route that I like	Frequent Route	5-Jun-14
Glen Rock / Saddle River Park / Rochelle Park / Maywood	Bike Route	Biking route that I like	Shopping Route	5-Jun-14
Ridgewood	Bike Route	Biking route that I like	Dedicated Bike Lane. Jovan M.	5-Jun-14
Ridgewood	Bike Route	Biking route that I like	Frequent Route	5-Jun-14
Ridgewood	Bike Route	Biking route that I like	Frequent Route	11-Jul-14
Ridgewood	Bike Route	Biking route that I like	frequent route	2-Jul-14
Ridgewood	Bike Route	Biking route that I like	Ridgewood Bike Route.	5-Jun-14
Ridgewood / Glen Rock	Bike Route	Biking route that I like	Connects to Waldwick via a scenic tour of Ridgewood. Jovan M.	5-Jun-14
Ridgewood / Glen Rock	Bike Route	Biking route that I like	continues north on Maple/Sheridan	5-Jun-14
Ridgewood / Glen Rock	Bike Route	Biking route that I like	Frequent Route	5-Jun-14
Ridgewood / Glen Rock	Bike Route	Biking route that I like	Frequent Route	6-Jun-14
Ridgewood / Glen Rock	Bike Route	Biking route that I like	Shopping Route	5-Jun-14
Ridgewood / Glen Rock	Bike Route	Biking route that I like	Shopping Route	5-Jun-14
Ridgewood / Glen Rock / Fair Lawn	Bike Route	Biking route that I like	Shopping Route	5-Jun-14
Ridgewood / Neighboring Towns	Bike Route	Biking route that I like	Frequent Route	5-Jun-14
Ridgewood / Neighboring Towns	Bike Route	Biking route that I like	Frequent Route	5-Jun-14
Ridgewood / Neighboring Towns	Bike Route	Biking route that I like	Frequent route	7-Jul-14
Ridgewood / Neighboring Towns	Bike Route	Biking route that I like	Frequent route	7-Jul-14
Ridgewood / Paramus	Bike Route	Biking route that I like	Frequent Route	5-Jun-14
Rochelle Park / Maywood	Bike Route	Biking route that I like	Frequent Route	5-Jun-14
Rochelle Park / Maywood	Bike Route	Biking route that I like	Frequent Route	5-Jun-14

APPENDIX B

Central Bergen County Bicycle Pedestrian Plan WIKIMAP COMMENTS

TOWN	TOPIC	CATEGORY	COMMENT	DATE
			River road, although having the more country feel along the river has limited space and would be of a higher risk to bikers.	
Elmwood Park	Bike Route	Route that I wish was better	There is some space for a bike lane between the river and the guardrail but I'm afraid this would be to expensive to develop.	9-Jun-14
Fair Lawn	Bike Route	Route that I wish was better	Ha	29-May-14
Fair Lawn	Bike Route	Route that I wish was better	marked bicycle lane in both directions on Fair Lawn Ave	5-Jun-14
Glen Rock	Bike Route	Route that I wish was better	My route from home to Glen Rock Duck Pond-Franklin and Maple both have issues biking on them. Prospect is less crowded but the wide lanes allow cars to typically drive 35mph+	5-Jun-14
Maywood / Rochelle Park	Bike Route	Route that I wish was better	Potential link from Maywood	28-Apr-14
Paramus	Bike Route	Route that I wish was better	steve	25-Mar-14
Ridgewood	Bike Route	Route that I wish was better	Dirt path connection gets muddy, and is steep	19-May-14
Rochelle Park	Bike Route	Route that I wish was better	Stripe a bike/walk area along the bridge.	28-Apr-14
Ridgewood	Destination	Activity Location	Existing sidewalk is only ~ 5 feet wide	7-Jun-14
Ridgewood	Destination	Activity Location	graydon pool	5-Jun-14
Ridgewood	Destination	Activity Location	Grove Park.	7-Jun-14
Elmwood Park	Destination	Activity Location	library	5-Jun-14
Glen Rock	Destination	Shopping destination	Strip mall	10-Jun-14
Maywood	Destination	Shopping destination	Maywood Market	10-Jun-14
Maywood	Destination	Shopping destination	Terri Lee Market	5-Jun-14
Neighboring Towns	Destination	Shopping destination	Hackensack Market	5-Jun-14
Neighboring Towns	Destination	Shopping destination	Lucky Farm Produce	9-Jun-14
Paramus	Destination	Shopping destination	Garden State Plaza	25-Mar-14
Paramus	Destination	Shopping destination	Paramus Park Mall	25-Mar-14
Paramus	Destination	Shopping destination	REI Recreational Equipment Inc can supply all cycling needs and repairs. Lots off apparel and trail food as well. Helpful staff!	6-Jun-14
Paramus	Destination	Shopping destination	Trader Joes	5-Jun-14
Ridgewood	Destination	Shopping destination	A&P	5-Jun-14
Ridgewood	Destination	Shopping destination	Goffle Road Poultry Farm	5-Jun-14
Ridgewood	Destination	Shopping destination	Whole Foods	5-Jun-14
Ridgewood	Destination	Shopping destination	Wilkes Deli. Close to the Duck Pond. Good place to grab a lunch to eat at the Pond.	5-Jun-14
Rochelle Park	Destination	Shopping destination	Shop Rite	5-Jun-14
Paramus	Destination	Walking destination	Transit and pedestrian access to the County College	28-Apr-14

APPENDIX B

Central Bergen County Bicycle Pedestrian Plan WIKIMAP COMMENTS

TOWN	TOPIC	CATEGORY	COMMENT	DATE
Ridgewood	Pathway	Area of Concern	Dirt and Sand Path from SRP to road needs to be paved.	5-Jun-14
Elmwood Park	Safety	Area of Concern	Rt 4 intersection, heavy traffic	10-Jun-14
Elmwood Park	Safety	Area of Concern	Steep and muddy connection between Berkshire Road and the path. Can this be paved?	27-May-14
Fair Lawn	Safety	Area of Concern	Choke point. Road narrows briefly for no apparent reason .	5-Jun-14
Fair Lawn	Safety	Area of Concern	dangerous and busy crosswalk since DPW/Recycling Center has a park and ride and the NJ Transit bus stop/shelter is on opposite side of Saddle River Road	30-Apr-14
Fair Lawn	Safety	Area of Concern	Dangerous Intersection. Elm and Maple and the entrances and exits from route 208.	5-Jun-14
Fair Lawn	Safety	Area of Concern	Heavy Pedestrian crossing	30-Apr-14
Fair Lawn	Safety	Area of Concern	Poor traffic patterns substandard width lanes no shoulders parallel parking heavy traffic	5-Jun-14
Glen Rock	Safety	Area of Concern	All up and down Maple ave fast moving traffic substandard width lanes and inadequate shoulders.	5-Jun-14
Glen Rock	Safety	Area of Concern	dangerous intersection with no safe bike standing location while waiting to cross Ackerman	30-Apr-14
Glen Rock	Safety	Area of Concern	Dangerous Intersection. Hazardous to travel from Diamnd Bridge Ave to Harristown Road via Lincoln.	5-Jun-14
Glen Rock	Safety	Area of Concern	Dangerous intersection. Rock road east of Maple substandard width for shared travel.	5-Jun-14
Glen Rock	Safety	Area of Concern	Hazardous, cars speed downhill on ackerman into ridgewood and unsafely pass bikes	7-Jun-14
Glen Rock	Safety	Area of Concern	Substandard lane width poor traffic patterns and many motorists entering and exiting the roadway.	5-Jun-14
Glen Rock	Safety	Area of Concern	Sustandard lane width parallel parking and speeding motorists create dangerous conditions on this road.	5-Jun-14
Maywood	Safety	Area of Concern	Haevy fast moving traffic inadequate shoulder substandard lane width	6-Jun-14
Neighboring Towns	Safety	Area of Concern	Path permanently covered in a thick layer of dirt and mud	7-Jul-14
Paramus	Safety	Area of Concern	Heavy fast moving traffic inadequate shoulders	5-Jun-14
Paramus	Safety	Area of Concern	Recessed sewer grates force bicycles out into heavy fast moving traffic	8-Jun-14
Paramus	Safety	Area of Concern	Route 17 Overpass congested and narrow lanes.	5-Jun-14
Ridgewood	Safety	Area of Concern	Dangerous Intersection. Poor Sight lines and fast moving traffic.	5-Jun-14
Ridgewood	Safety	Area of Concern	Dangerous Intersection. Poor sight lines and fast moving traffic.	5-Jun-14
Ridgewood	Safety	Area of Concern	Heavy fast moving traffic inadequate shoulders substandard width lanes.	5-Jun-14
Ridgewood	Safety	Area of Concern	Heavy fast moving traffic inadequate shoulders.	5-Jun-14
Ridgewood	Safety	Area of Concern	Heavy traffic lots of cars entering and exiting roadway parallel parking substandard width lanes.	5-Jun-14
Ridgewood	Safety	Area of Concern	Speed humps or something are needed to slow down cars on West End Avenue.	9-Jun-14

APPENDIX B

Central Bergen County Bicycle Pedestrian Plan WIKIMAP COMMENTS

TOWN	TOPIC	CATEGORY	COMMENT	DATE
Ridgewood	Safety	Area of Concern	Steep and muddy connection between Berkshire Road and the path. Can this be paved?	27-May-14
Ridgewood	Safety	Area of Concern	Substandard width lanes inadequate shoulders heavy fast moving traffic	5-Jun-14
Ridgewood	Safety	Area of Concern	substandard width lanes parallel parking.	2-Jul-14
Rochelle Park	Safety	Area of Concern	Heavy fast moving traffic inadequate shoulders substandard width lanes poor pavement condition.	5-Jun-14
Rochelle Park	Safety	Area of Concern	Heavy fast moving traffic substandard width lanes and inadequate shoulders	5-Jun-14
Rochelle Park	Safety	Area of Concern	Heavy fast moving traffic substandard width lanes inadequate shoulders heavy bus traffic entire length of passaic street	5-Jun-14
Rochelle Park	Safety	Area of Concern	Very bad intersection for bikes. Lots of impatient motorists, many run the red. No other good way from points south.	5-Jun-14
Rochelle Park	Safety	Area of Concern	Again, very busy intersection so bikers and pedestrians must share a very narrow 2.5-3 ft. sidewalk to get to bridge to cross.	19-May-14
Saddle Brook	Safety	Area of Concern	very narrow walkway over River for bikes and pedestrians (2.5-3 ft.?). Roadway is too narrow for bikes. Conflicts!!!	19-May-14
Saddle Brook	Safety	Area of Concern	intersection of Plaza Rd and Fair Lawn ave is not bicycle friendly at all	16-Jun-14
Fair Lawn	Safety	Route that I wish was better	Walkway from northern side of the Broadway down to the Saddle River Road is not being cleaned, especially in the winter. Crossing of the roadways under north bound of route 208 is not safe/unregulated.	16-Jun-14
Fair Lawn	Safety	Route that I wish was better	A crosswalk at Red Mill/Paramus Rd would be nice, with a signal-changing button. When Saddle River rises high enough to flood the Saddle River Pathway bridges under Rt 4 and Red Mill Rd, the best way north is to leave the part at Red Mill Rd and then head north on Paramus Rd.	1-Jun-14
Paramus	Safety	Route that I wish was better	The northbound section of W. Passaic Rd/Paramus Rd is very un-bike-friendly. Obviously this is high traffic, with the Plaza, GSP, and Rt 4 all right there. But to exacerbate the issue, the pavement condition is horrible, forcing bikes into the middle of the road.	1-Jun-14
Paramus	Safety	Route that I wish was better	There is no sidewalk in front of the house located on eastern side of the Saddle River Road at the approach to the County Pitch.	16-Jun-14
Fair Lawn	Sidewalks	Route that I wish was better	this is route that is least dangerous to access park, but still not great.	30-Apr-14
Glen Rock	Sidewalks	Walking route that I like	Gravel Path connecting to Linwood Ave. Jovan M.	5-Jun-14
Ridgewood	Sidewalks	Walking route that I like		25-Mar-14
Ridgewood	Sidewalks	Walking route that I like		
Glen Rock	Signage	Biking Destination	I always miss this turn. Maybe a sign could be added pointing everyone to the park.	24-May-14
Elmwood Park		Activity Location	Spray park at prevailing rates	10-Jun-14

APPENDIX B

Central Bergen County Bicycle Pedestrian Plan WIKIMAP COMMENTS

TOWN	TOPIC	CATEGORY	COMMENT	DATE
Neighboring Towns	Destination	Biking route that I like	I bike to Shoprite Hackensack to do food shopping with my family. We usually go when there's less traffic like after 8pm. Of course we have the bike lights on	3-Aug-14
Neighboring Towns	Destination	Biking route that I like	My daughter bikes her way to the Hackensack Middle school. The school has a bike rack but they lack bike lanes to safely get more students to school.	3-Aug-14
Paramus	Destination	Route that I wish was better	We ride with my daughter and wife to the Bergen Mall and it would be nice if there were bike lanes.	3-Aug-14
Paramus	Destination	Route that I wish was better	AMC has a bike rack but getting there from home isn't the best once you get off Central Ave onto Rochelle Ave especially the intersection of Passaic St and Farview Ave	3-Aug-14
Maywood / Rochelle Park	Destination	Route that I wish was better	Getting to the Saddle Brook path needs to be improved on Central Ave. A bike lane is needed at the intersection of Rochelle Ave and Central Ave needs to have a light where they let bikes go first.	3-Aug-14
Neighboring Towns	Destination	Route that I wish was better	I shop with the family at this Shoprite and eat at the local restaurants like Taco Bell and KFC and there aren't any bike lanes. It would be nice and safer to have bike lanes heading towards this destination.	3-Aug-14
Neighboring Towns	Bike Route	Route that I wish was better	My daughter rides to the middle school and they have a bike rack but they lack bike lanes heading towards the school. More kids would ride if the infrastructure were there	3-Aug-14
Neighboring Towns	Bike Route	Route that I wish was better	The perimeter around the High School needs bike lanes. Again they have the bike rack but the kids especially my older son would love to ride but we lack bike lanes.	3-Aug-14
Neighboring Towns	Bike Route	Route that I wish was better	I'm a bike fanatic and a commuter. I work in NYC and commute there from Hackensack via this route. The worst part of this route is in Teaneck on Degraw Ave. This area definitely NEEDS a bike lane and a reduction on speed and some type of police enforcement	3-Aug-14
Neighboring Towns	Bike Route	Route that I wish was better	Main Street needs a bike lane. I conduct plenty of business on these corridors whether I'm on Main Street or going to Target in Hackensack	3-Aug-14
Maywood / Rochelle Park	Bike Route	Route that I wish was better	Passaic St from Main Street up until about Shoprite in Rochelle Park needs a bike lane so that we can go shopping to that 24-hour market	3-Aug-14
Neighboring Towns	Bike Route	Route that I wish was better	I ride my bike from Hackensack to Red Bull Arena and usually take this route. It would be awesome if there would be bike lanes on First Street beginning on Central Ave going through Polifly Rd then through Hackensack Ave up until Rutherford. The road is mostly good.	3-Aug-14
Paramus	Bike Route	Route that I wish was better	I take the Saddle Brook path to the BCC from Hackensack. Once you exit Dunkerhook Rd and would like to ride over to the college. Paramus Rd is very sketchy and dangerous. The college has bike racks but where is the adequate bike infrastructure to get to	3-Aug-14
Paramus	Safety	Area of Concern	Pinch Point. Tight traffic lanes under parkway. Limited sight distance with curve in road and darkness under parkway.	4-Aug-14

APPENDIX B

Central Bergen County Bicycle Pedestrian Plan WIKIMAP COMMENTS

TOWN	TOPIC	CATEGORY	COMMENT	DATE
Maywood	Bike Route	Route that I wish was better	I feel that there is a great amount of work to be done to make streets safer, by adding bike lanes to major parks. I would love to ride on this route with my bike trailer and BBQ with my family. Unfortunately not everyone is as experienced and bold as I	4-Aug-14
Paramus	Destination	Route that I wish was better	I bike from time to time from Garden State Plaza over to the Sports Authority and they have a bike rack, but again we lack bike lanes to get us there safely. I shop at sports authority and also at IKEA.	4-Aug-14
Neighboring Towns	Bike Route	Route that I wish was better	This route surrounds the middle school. The kids need a bike lane	4-Aug-14
Neighboring Towns	Bike Route	Route that I wish was better	bike lane especially going over Anderson st bridge from hackensack to Teaneck	4-Aug-14
Neighboring Towns	Accessibility	Route that I wish was better	I usually bike or occasionally walk this route to get to the stores situated on the RT 4 east side. For example the Wendys the Popeyes. However at least 10 years ago there used to be a sidewalk that was done away with.	4-Aug-14
Neighboring Towns	Bike Route	Biking route that I like	I like this route and again bike lanes needed	4-Aug-14
Maywood / Rochelle Park	Bike Route	Biking route that I like	I cut through the Maywood Pool lot to avoid some less fun roads. Maywood pool lot gate is closed sometimes and should be reviewed. I know railroads are difficult, but the NYSW ROW would be awesome option.	4-Aug-14
Glen Rock	Destination	Biking Destination	Public restrooms accessed here.	7-Aug-14
Neighboring Towns	Bike Route	Biking route that I like	This route avoids rough road along Franklin Tpke north to Sheridan.	7-Aug-14
Fair Lawn	Bike Route	Area of Concern	Pavement condition between 208 and Fair Lawn Ave is terrible and hazardous for bikes	20-Oct-14
Paramus	Safety	Area of Concern	Pedestrian Hit and Run Accident	5-Dec-14



APPENDIX C

Public Open House Summaries

You're Invited!



Central Bergen BIKE + WALK

The Central Bergen Bicycle & Pedestrian Plans

PUBLIC OPEN HOUSE

WHO

Anyone currently (or interested in) **bicycling** and **walking** in the Central Bergen area particularly in the communities of Elmwood Park, Fair Lawn, Glen Rock, Maywood, Paramus, Ridgewood, Rochelle Park and Saddle Brook.

WHAT

Bergen County is developing the **Bicycle** and **Pedestrian** Plans, with funding support from the North Jersey Transportation Planning Authority (NJTPA). **WE WANT YOUR INPUT.** We will be conducting **group discussions** to hear your thoughts on the **existing conditions** for walking and biking in the area and discuss what the **priority routes** should be for potential improvements for **enhancing bicycle and pedestrian travel** in the area. **This is your chance to voice any ideas, concerns and aspirations for the future of walking and bicycling in your community.**

For more information go to:
www.centralbergenbikewalk.com

WHY

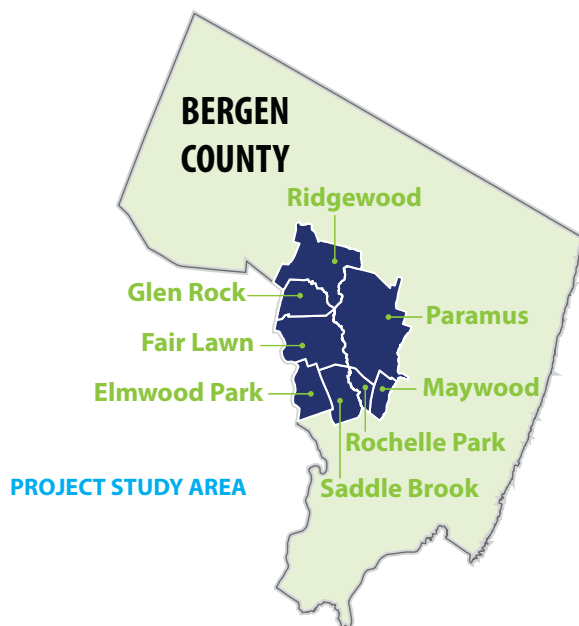
To help make **walking** and **bicycling** in your neighborhood safer for **everyone**.

WHEN

Thursday June 5, 2014, 4 - 7p.m.

WHERE

Rochelle Park Senior Center
151 West Passaic St., Rochelle Park, NJ 07662



Central Bergen BIKE+WALK

The Central Bergen Bicycle & Pedestrian Plans

SUMMARY OF PUBLIC MEETING #1

The first public meeting for the Central Bergen Bicycle and Pedestrian Plans was held on Thursday, June 5, 2014 at the Rochelle Park Senior Center in Rochelle Park, New Jersey. The meeting was conducted as an open house from 4 p.m. to 7 p.m. The purpose of the meeting was to provide information on the project as well as receive comments and feedback from the public on:

- where they are currently biking and walking within the 8-community study area;
- where they would like to bike and walk in the future within the study area;
- locations of existing problem areas for bicyclists and pedestrians; and
- improvements they would like to see that would enhance bicycle and pedestrian travel within the study area.

As meeting attendees entered the meeting space, they were asked to provide their contact information for the project record (see attached list of participants). Overall, 29 people attended, representing Bergen County, the North Jersey Transportation Authority (NJTPA), the New Jersey Bike Walk Coalition, as well as County and regional residents with an interest in biking and walking. Residents from the following study area communities were in attendance: Maywood, Glen Rock, Fair Lawn, Rochelle Park, and Ridgewood.

Participants visited open house stations consisting of several large presentation boards:

- Background and purpose of the Central Bergen Bicycle and Pedestrian Plans;
- Bicycle, pedestrian, and complete streets treatments that could be applied to study area streets to improve conditions for bicyclists and pedestrians;
- Project mapping including a study area map as well as a “hot spot” map depicting the location of bicycle- and pedestrian-related crashes along study area routes.

Meeting attendees then had the opportunity to provide feedback using markers on large versions of study area mapping. Meeting attendees were asked to consider:

- Biking and walking routes that they liked – mark in blue
- Off-road connections – mark in green
- Routes that they wish were better – mark in orange
- Problem areas – called out in any color

Mike Dannemiller, the RBA Team Project Manager, also provided a demonstration of an online, interactive mapping tool that allows members of the public to “draw” their biking and walking routes, call out biking and walking destinations, issue areas, etc. Mike showed attendees how to log onto the site and how to provide the pertinent information:

<http://wikimapping.com/wikimap/Bergen.html>

Meeting attendees also had the opportunity to provide written comments. A paper questionnaire/comment card was available for attendees wishing to provide additional comments on the following questions:

- Do you bike or walk within the area now? Where?
- In your opinion, what are the impediments to moving forward with a more bicycle- and pedestrian-friendly community?
- What are the most exciting opportunities for improvement?
- Other thoughts about bicycle and pedestrian improvements.....?

Attendees placed completed comment cards in the comment box provided by the project team.

PUBLIC OPEN HOUSE

June 5th, 2014

Sign-in Sheet 1 of 4

Welcome! Please sign-in so we can keep you updated about the project and future meetings.

NO	NAME	ADDRESS	EMAIL	PHONE
1	Carrie Washburn	28 Swiss Terr, Wayne NJ	CLWASHBURN@VERIZON	973-694-3334
2	Maria Klein	One DC Plaza Hackensack NJ 07601 BCDHS - Bergen County	mklein@co.bergen.nj.us	201-634-2693
3	Chris Helms	1 Bergen Co. Plaza Hackensack NJ 07601	chelmso@co.bergen.nj.us	201-336-6443
4	Dolores R NEW MAN	39W CENTRAL AVE MAYWOOD	NEW39W@AOL.COM	201-368-0678
5	Megan Kelly	1 Newark Ctr Dr NJ 07102	mkelly@njtpa.org	973-639-8414
6	Chris Patoia	27 MONTLOCK PLACE GLEND ROCK	CHRISPATOIA@GMAIL.COM	201-251-7785
7	Cyndi Steiner	2551 Kirk J Walk Coakley	CYNDI.STEINER@NJSPK.COM	973-556-4142
8	Kendra Khawaja	20 E. 36th St. Paterson NJ	Kendra.khawaja@gmail.com	



NJTPA
NORTH JERSEY
TRANSPORTATION
PLANNING AUTHORITY

RBA
**PARSONS
BRINCKERHOFF**



Fitzgerald & Halliday, Inc.
Innovative Planning, Better Communities

PUBLIC OPEN HOUSE

June 5th, 2014

Sign-in Sheet 2014

Welcome! Please sign-in so we can keep you updated about the project and future meetings.

NO	NAME	ADDRESS	EMAIL	PHONE
9	Ray Richter	19-15 Jordan Rd Fair Lawn	RJRMR@Verizon.net	201-794-1435
10	Allison Zierold	Bergen County Dept. of Health One Bergen Plaza Hackensack, N.J. 532 MONROE STREET CARLSTADT, NJ 07072	a.ferrara@co.bergen.nj.us allisonzierold15@gmail.com	201-634-2707 (201) 359-5546
11	Michael Tromp	14 Redcliffe (3rd) Pl 08904	mt771c@scarletmail.nyu.edu	908 528 3722
12	Hay Brookman	4 Allen Place Fair Lawn	opahan@yahoo.com	201 703 8699
13	James F Bohan	25 Marinus St Boonville Park		

PUBLIC OPEN HOUSE

June 5th, 2014

Sign-in Sheet 3 of 4

Welcome! Please sign-in so we can keep you updated about the project and future meetings.

NO	NAME	ADDRESS	EMAIL	PHONE
15	CATHERINE ALIOTTA	23-05 HIGH ST. APT B HIGH ST. FAIR LAWN NJ	CAHIALIOTTA@YAHOO	901-835-7487
16	Daniel Park	100 Riveredge Pl. Tenafly NJ	dparkbh@tenafly.net	201-568-6100
17	Eugene Murphy, Jr.	Bergen County P.R.K-Eng.	emurphy@co.bergen.nj.us	201-336-6822
18	BRYAN CRONIN	53 Rochelle Ave Rochelle Park NJ 07662	bpcronin@hotmail.com	201-845-6470
19	ILENEKAHN	360 OWEN AV FAIR LAWN NJ	ilenekahn@gmail.com	201-796-6370
20	Way Botter	34 Blauy Rock Pk	CHIEFBILL1934@AOL.COM	201-845-8688
21	JEANNE JOHNSON	325 MAGNY PLAZA R. OGEWOOD	JEANNEHOPE@YAHOO	201-851-3262



PUBLIC OPEN HOUSE

June 5th, 2014

Sign-in Sheet 4 of 4

Welcome! Please sign-in so we can keep you updated about the project and future meetings.

NO	NAME	ADDRESS	EMAIL	PHONE
22	Ken Aloisio	1 Bergen County Plaza Hackensack, NJ	Kalouisio@co.bergen.nj.us	201.336.6454
23	Rosana Pellegrino	69 Forest Place, Rockwell Park, NJ	rpellegrino8718@yahoo.com	
24	Donna Orbach	1 Bergen County Plaza, Hackensack, NJ	dorbach@co.bergen.nj.us	201-336-6438
25	Robert Davidse	15/ W. Passaic St. Rockwell, NJ	Robert.H.Davidse@gmail.com	not 201-577-7730
26	Alan Ginder	49 Kethner St. Bloomfield, NJ 07003	ginder1@verizon.net	973-338-7293
27	JOE RAMBERG	142 Melrose Pl. Ridgewood NJ 07450	joramberg@gmail.com	201-447-0418
28	Ron Grasinger	140 Tucker Rockwell-Englewood	Ron.Grasinger@GMAIL.COM	
29	Mike Dannemiller	The RBA Group - 7 Campus Dr Parlissany NJ 07054	MDannemiller@rbagroup.com	973-946-5626



NJTPA
 NORTH JERSEY
 TRANSPORTATION
 PLANNING AUTHORITY

RBA **PARSONS BRINCKERHOFF**



Fitzgerald & Halliday, Inc.
 Innovative Planning, Better Communities

You're Invited!



Central Bergen BIKE + WALK

The Central Bergen Bicycle & Pedestrian Plans

2nd PUBLIC WORKSHOP

WHO

Anyone currently (or interested in) **bicycling** and **walking** in the Central Bergen area within the communities of Elmwood Park, Fair Lawn, Glen Rock, Maywood, Paramus, Ridge-wood, Rochelle Park and Saddle Brook.

WHAT

Bergen County is developing the **Bicycle** and **Pedestrian** Plans, with funding support from the North Jersey Transportation Planning Authority (NJTPA). **WE WANT YOUR INPUT.** We will present the **priority bicycle and pedestrian** network, the **data** collected and the potential bicycle and pedestrian facilities. We need your help in deciding what types of improvements will make you **feel safe bicycling and walking** in your community. **This is your chance to provide any ideas, concerns and aspirations for the future of walking and bicycling in your community.**

For a map of the priority network and more information go to:

www.centralbergenbikewalk.com

WHY

To help make **walking** and **bicycling** in your neighborhood safer for **everyone**.

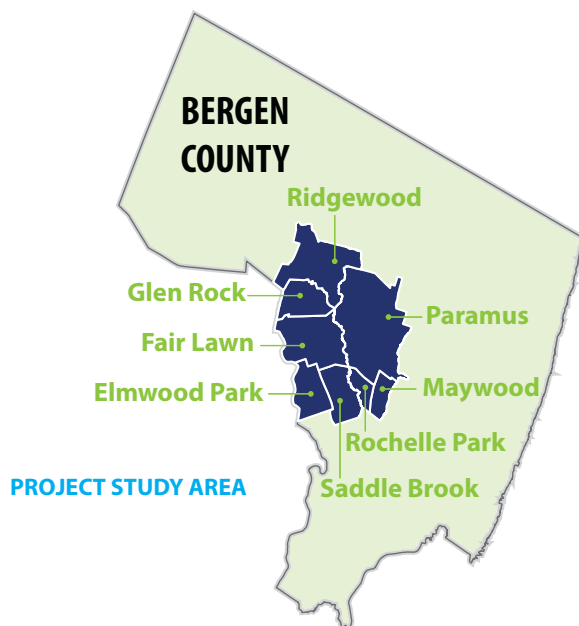
WHEN

Wednesday December 3, 2014, 4 - 7p.m.

WHERE

Rochelle Park Senior Center

151 West Passaic St., Rochelle Park, NJ 07662



FITZGERALD & HALLIDAY, INC.

Meeting Memorandum

To: Ken Aloisio

CC: Annette Schultz, Peter Kremer, Kristen Ahlfeld

From: Mike Dannemiller, Annette Schultz, Rachana Sheth

Date: December 3, 2014

Re: Central Bergen Bicycle and Pedestrian Plans
2nd Public Workshop Summary

The second public workshop was held on December 3rd 2014 at the Rochelle Park Senior Center. The focus of the meeting was to solicit feedback on the proposed bicycle network and the selected areas for potential pedestrian improvements. There were 11 attendees in addition to the 3 members from the project team. The project team presented individual maps for each of the 8 municipalities which showed the proposed bicycle network and selected focus areas for pedestrian improvements. In addition, the project team presented a series of concepts showing the different pedestrian and bicycle facilities recommended for the study area. The attendees reviewed the proposed network and focus areas and identified potential routes and focus areas within each municipality.

The following is a summary of the feedback received during the workshop:

Overall study area:

1. Ensure safe access to commuter bus stops (tied into overpasses)
 - a. NYC-Bound
 - i. Linwood Avenue
 - ii. Ridgewood Avenue
 - iii. A + S Drive (Paramus)
 - iv. Midland Avenue
 - v. Century Road

Ridgewood:

1. Short term pedestrian improvements using paint channelization and then long term curb can be considered
2. At Prospect St and S. Maple Avenue intersection, have pedestrian countdowns in place?

3. "CBD Hatching" for all new crosswalks
4. Provide safe crossing to Duck Pond Area (E Ridgewood Avenue)
5. New connection along county property? Saddle River Park
6. Existing trail extending from Duck Pond to Linwood Ave?
7. Consider doing a temporary test striping along Ridgewood Avenue prior to the 2015 repaving

Glen Rock:

1. Check Maple Avenue (width = 30'). Does bike lane really fit?
2. Bike Lane along Hamilton Avenue?

Fair Lawn:

1. Ped access at Park n ride in DPW opposite NJ Transit bus stop. (On Saddle River Rd south of Garwood Rd).
2. Currently cyclists use Route 4 shoulder for bicycle access.
3. Any way to connect to BCCC?

Elmwood Park:

1. Artesian field walking path along Gilbert Avenue
2. Yes for Bike Lane along Boulevard (see parking markings on Map)
3. Market street – new sidewalks and streetscape coming in 2015 + promote
4. Flood zone along River Drive, boat basin, we need sidewalks – high priority in-land side
5. Currently cyclists use Route 4 shoulder for bicycle access
6. Remove sidewalk from southbound River Drive

Saddle Brook: (no comments)

Rochelle Park:

1. Need pedestrian access to shopping along W. Passaic Street (shoprite) and for bus riders along Passaic Street.
2. Pedestrian access along Harvey and Fairfield Drive to Garden State Plaza mall
3. Terrace Avenue and Rochelle Avenue – key intersection for safety – even crossing guards have been hit
4. Railroad Avenue provides access into the south end of the Saddle River Park path.
5. Consider shared use path bridge parallel to Railroad Ave.
6. Bus stop near GSP see Paramus map and apple unilaterally across study area

Maywood:

1. No ex. sidewalk E. Spring Valley Avenue

Paramus:

1. Need more bicycle racks at Bergen Community College as all racks are full
2. Can Forest Avenue be considered for road diet?
3. Currently cyclists use Route 4 shoulder for bicycle access

4. Consider a pedestrian underpass or overpass to connect the college with the Saddle River park trail
5. Pedestrian bridge access needed at Route 4 ramp along Forest Avenue and Spring Valley Road?
6. Pedestrian bridge access needed on Route 17 to access Garden State Plaza mall?
7. Access to Saddle River Path from Bergen Community College
8. Pedestrian movements at Bergen Community College are not peripheral, they are more geared to getting into campus – (central) from Paramus road and parking areas. Peripheral movement maybe more appropriate for bicycles accessing campus from the main arteries / approaches.
9. Signs entering campus state that there is to be no trespassing on Bergen Community College property.
10. There is senior housing between Route 4 and Paramus Road – consider access to Saddle River Path from here
11. Bus stop area outside Garden State Plaza mall (see map), Access to both from East/West/South sides
12. Safe access for bikes and pedestrians to Garden State Plaza mall – provide from Plaza Way and Garden State Plaza Blvd. and across Passaic Street from Rochelle Park.
13. See Map for bus stop locations near Bergen Town Center – provide safe access for bicycles and pedestrians.
14. Missing sidewalk on Route 4 to access the bus stops near Bergen Town center
15. Link to bus stop / staging area near Paramus Park mal
16. Is Midland Ave really bike lane eligible?

Comment Form Response

Thank you, I learned more about the Central Bergen Bike+Walk Plans. As a cyclist, I welcome any improvements to make the roads safer. I am on the Saddle River Park Bike Path often and think that any improved access to the path is a good idea. Keep up the good work.

2nd PUBLIC WORKSHOP

December 3rd, 2014

Sign-in Sheet

Welcome! Please sign-in so we can keep you updated about the project and future meetings.

NO	NAME	ADDRESS	EMAIL	PHONE
1	Mike Dannemiller	The RBA Group	mDannemiller@rbagroup.com	973 746-5626
1	Donna Orbach	Bergen County	dorbach@co.bergen.nj.us	201-336-6438
	Daniel Turner	Parsons Brinckerhoff	turnerdr@pbworld.com	609-512-3607
	Drew Draper	FHI	Arew, draper@fh.plan.com	860-247-7200
	Ken Aloisio	Bergen County	kaloisio@co.bergen.nj.us	201.336.6454
	Megan Kelly	NJTPA	mkelly@njtpa.org	973-639-8414
	Chris Helms	Bergen County Planning		
	JOVAN MEHANDRIC	131 N. MAPLE AVE RIDGEWOOD	JMEHANDRIC@RIDGEBUSINESS.NET	201-620-5500x 236
	Danny Santora	116 S. Prospect Bergenfield, NJ Ave	danSantora@gmail.com	201-606-5178
	Sydney Williams	REI Paramus		
	T.J. Montuoro	93 E. Spring Valley Ave Maywood NJ	tjmontuoro@gmail.com	201-845-4171
	Wayne Bargiel	225 McKenzie St. Saddle Brook, N.J. 07663	Wayne.bargiel@gmail.com	201-845-4658



2nd PUBLIC WORKSHOP

December 3rd, 2014

Sign-in Sheet

Welcome! Please sign-in so we can keep you updated about the project and future meetings.

NO	NAME	ADDRESS	EMAIL	PHONE
	GLEN PITTIGANO	150 Elmwood DR	GLEN.PITTIGANO@GMAIL	201 218 4322
	Megan Moen	Tenafly, NJ		908 887 1137



2nd PUBLIC WORKSHOP

December 3rd, 2014

Comment Form

Thank you, I learned more about the Central Bergen Bike + Walk Plans.
As a cyclist I welcome any improvements to make the roads
safer. I am the Saddle River Park Bike Path often and think that
any improved access to the path is a good idea. Keep up the good work.

When completed, please return back to Michael Dannemiller or return by mail, fax or email to:

The RBA Group – Attn: Michael Dannemiller
7 Campus Drive, Suite 300, Parsippany, NJ 07054
Telephone: (973) 946-5626 Fax: (973) 898-9472
E-mail: mdannemiller@rbagroup.com



Fitzgerald & Halliday, Inc.
Innovative Planning, Better Communities

You're Invited!



Central Bergen BIKE+WALK

The Central Bergen Bicycle & Pedestrian Plans

FINAL OPEN HOUSE

WHO

Anyone currently (or interested in) **bicycling and walking** in the Central Bergen area within the communities of Elmwood Park, Fair Lawn, Glen Rock, Maywood, Paramus, Ridgewood, Rochelle Park and Saddle Brook.

WHAT

Bergen County is developing the **Bicycle** and **Pedestrian** Plans, with funding support from the North Jersey Transportation Planning Authority (NJTPA). We heard **your thoughts, ideas and concerns** about improving **walking** and **bicycling** in your community. We refined the **final bicycle** and **pedestrian** network with officials from your towns. **THIS IS THE FINAL PHASE.** We want to hear your thoughts on the final recommendations of the **Central Bergen Bicycle** and **Pedestrian** Plans before we prepare the **final** document.

This is your last chance to provide your input and recommendations on the proposed Bicycle and Pedestrian network.

For a map of the priority bicycle and pedestrian network and more information go to:

www.centralbergenbikewalk.com

WHY

To help make **walking** and **bicycling** in your neighborhood safer for **everyone**.

WHEN

Thursday April 16, 2015, 4 - 7p.m.

WHERE

Elmwood Park Recreation Center
500 Boulevard (corner of Market Street)
Elmwood Park, NJ 07407



PROJECT STUDY AREA





FROM: D. Draper, M. Dannemiller, K. Perry
TO: Ken Aloisio
DATE: April 16, 2015
SUBJECT: Central Bergen Bicycle and Pedestrian Plans
Final Public Meeting 4/16/2015
RBA #J4710.00

The Central Bergen Bicycle and Pedestrian Plans (CBBPP) Project Team held a final Public Meeting on Thursday, April 16, 2015 at the Elmwood Park Senior Center in Elmwood Park, New Jersey. The purpose of this meeting was to share the final draft versions of the Plans and gather feedback on the most recent conceptual improvements.

Overall, 25 people attended, representing mainly North Jersey residents with an interest in biking and walking (sign-in sheet attached). Attendees had the opportunity to discuss the project in more detail with the Project Team, review presentation boards with proposed recommendations, and provide hand-drawn comments and feedback on the maps of the study area. Attendees were then able to submit comment cards to the Project Team. A total of 3 comment cards were completed at the meeting (attached). In general, attendees were pleased with elements of the Plans and would continue to offer support for implementation. Specific comments and feedback from participants are summarized below:

MAYWOOD COMMENTS

- Attendees referenced an existing bike path that extends between Spring Valley Road and Grant Avenue; therefore, the Spring Valley Road recommendations will enhance – and compliment – the existing network.
 - The old trolley line is used informally as a bike/pedestrian pathway. Consider formalizing between S. Farview Avenue and Spring Valley Road.
-

ROCHELLE PARK COMMENTS

- County project at Rochelle Avenue at Essex Railroad Avenue Bridge – need for enhancements reiterated by attendees.
-

RIDGEWOOD COMMENTS

- No sidewalks exist along W. Glen Avenue east of current recommendation to Hillcrest Road.
- No sidewalks exist along E. Glen Avenue between Downing Street and N. Maple Avenue.
- Commercial property along Maple Avenue just south of the Ho-Ho-Kus border near 2nd Street and Pine Street is being redeveloped; therefore, a possibility to include bicycle facilities to enhance the overall network.

- Maple Avenue is a popular bike route and bicyclists are consistently observed throughout the day.
 - No sidewalks exist and/or they alternate side along Maple Avenue from Mulberry Plaza south to Brookmere Court.
 - A difficult intersection crossing for bicyclists and pedestrians exists at the intersection of Robinson Lane and Maple Avenue.
 - A difficult intersection crossing for bicyclists and pedestrians exists at the intersection of N. Walnut Street and Franklin Avenue.
 - Attendees referenced an existing gravel path that extends from Wild Duck Pond Park north to Linwood Avenue. Good connection to recommendations along Linwood Avenue.
 - Consider extending the recommendation along Spring Avenue to the Saddle River trail via N. Pleasant Avenue and Witthill Road.
 - Attendees referenced several formal – and informal – dirt path connections to the Saddle River trail off several residential streets east of N. Pleasant Avenue between Spring Avenue and Grove Street.
 - In general, many crashes occur along Franklin Avenue – consider a priority segment.
-

GLEN ROCK COMMENTS

- No comments
-

FAIRLAWN COMMENTS

- In general, attendees would like the recommendation for sharrows to remain on Maple Avenue – extending north through other municipalities.
 - Attendees desired enhanced connections between Fair Lawn Avenue and Dunkerhook Road. From there, the Plans include recommendations for direct connections to the Bergen Community College.
 - Attendees were concerned over recommendations near Route 4/Route 208. Consider extending bike lanes (recommended along Broadway) south of Route 4 to Saddle River Road.
 - Storm drain slots present a danger to bicyclists as tires can become lodged.
-

SADDLE BROOK COMMENTS

- No comments
-

ELMWOOD PARK COMMENTS

- The recommendation for sidewalks along River Road may need to extend north to the Borough border.
 - Attendees were interested in lowering the posted speed limit of 35 mph on Boulevard to 30 mph.
 - Molnar Drive was referenced as a great location for biking but bridge under the railroad track is narrow and dangerous.
-

PARAMUS COMMENTS

- Implementing sharrows on Midland Avenue at the Route 17 crossing may offer a solution to help mitigate safety concerns.
 - Attendees indicated cyclists are commonly observed on Paramus Road; therefore, protected bike lanes may offer benefits (independent of property impacts).
-

3rd PUBLIC WORKSHOP

April 16, 2015

Sign-in Sheet

Welcome! Please sign-in so we can keep you updated about the project and future meetings.

NO	NAME	ADDRESS	EMAIL	PHONE
1	Mike Dannemiller	The RBA Group	m.dannemiller@rbagroup.com	
2	Drew Draper	FHI	drew.draper@fhiplan.com	
3	Reed Sibly	Parsons Brinckerhoff	sibly@pbworld.com	
4	Juan Vancio	10 Midland Ave	JUANVANCIO@YAHOO.COM	
5	Noreen Rochford	10 Midland Ave, Bouthorn	noreenmann.rochford@gmail.com	
6	Kenn Salka	2511 Southside Fair Lane	jsalka@gmail.com	
7	Ruth Pellegrino	69 Forest Place, Rochelle Park	r-pellegrino@718id.yahoo.com	
8	Rhynne Edman	NJTPA	beam@njtpa.org	
9	Han Broekman	4 Allen Pl	opahan@yahoo.com	
10	Richard A Mota	Mayor		
11	Kevin Funabushi	30 Westwood Ave Westwood	kfunabushi@co.bergen.nj.us	
12	Monica Bresser	492 Northern Pkwy Ridgewood	Bresser@optonline.net	



NJTPA
NORTH JERSEY
TRANSPORTATION
PLANNING AUTHORITY



PARSONS
BRINCKERHOFF



Fitzgerald & Halliday, Inc.
Innovative Planning, Better Communities

3rd PUBLIC WORKSHOP

April 16, 2015

Sign-in Sheet

Welcome! Please sign-in so we can keep you updated about the project and future meetings.

NO	NAME	ADDRESS	EMAIL	PHONE
13	JUAN MEHANDZIC	VILLAGES OF RIDGEWOOD	RIDGEWOODS-NJ JMEHANDZIC@	
14	Neeta Patel	Meadowlark SPTS	mpatel@ezride.org	201-939-4242
15	STEPHEN MOSCA	44 E. CENTRAL AVE HOYWOOD	MOSCA@GO-ONE.US	201 225 1768
16	JOE BAMBBERG	142 MERSELL RIDGEWOOD	jambenberg@gmail.com	201. 947. 0418
17	WARMY POSTER	13-10 2 ND ST FL.	-	201 784. 9602
18	Anna Di Nardo	13-06 2 ND ST FL.	-	-
P1	JEANINE JOHNSON	RIDGEWOOD	JEANNEHOP@YAHOO	201-851-3262



3rd PUBLIC WORKSHOP

April 16, 2015

Comment Form

Major Problem -

STORM DRAINS HAVE LARGE SLOTS, AND
BIKES TIRE LODGE IN THEM, CAUSING SUDDEN
STOPS - AND BIKE DRIVERS FLY OVER THE
HANDLE BARS!

(BETTER DRAINS HAVE HOLES, RATHER THAN SLOTS.)

HARRYFOSTER

13-10 2nd ST

FAIR LAWN NJ 07410

201-794-9606.

When completed, please return back to Michael Dannemiller or return by mail, fax or email to:

The RBA Group - Attn: Michael Dannemiller
7 Campus Drive, Suite 300, Parsippany, NJ 07054
Telephone: (973) 946-5626 Fax: (973) 898-9472
E-mail: mdannemiller@rbagroup.com



Fitzgerald & Halliday, Inc.
Innovative Planning. Better Communities

3rd PUBLIC WORKSHOP

April 16, 2015

Comment Form

- ① Maywood has a new Mayor & may be convinced to adopt the 2010 Bike Plan if you consider more sharrows.
- ② Project should be county wide. Also, consider including Passaic County. There is an opportunity to connect Bergen County to the "Great Falls" in Paterson.
- ③ Plan should connect to the GW Bridge; New Overpeck Park & Saddle River Bike/PED Path.
- ④ N.J. District Tim Eustach will support the plan. Call him if you need political assistance. He is pro walk & pro bike.
- ⑤ Extend the proposed Forrest Ave Bike Path to Essex Street via Maywood Ave. Maywood Ave needs a Lane & Sign. There is ample width for single lane traffic both ways.
- ⑥ Review the speed limits on County Road bisecting Maywood. They are currently posted at 35. I think the legal limit is 25. The speed limit needs to be reduced.

CALL ME w/ Question Steve Mosca 201226 1768

When completed, please return back to Michael Dannemiller or return by mail, fax or email to:

The RBA Group - Attn: Michael Dannemiller
7 Campus Drive, Suite 300, Parsippany, NJ 07054
Telephone: (973) 946-5626 Fax: (973) 898-9472
E-mail: mdannemiller@rbagroup.com



3rd PUBLIC WORKSHOP

April 16, 2015

Comment Form

I HIGHLY RECOMMEND INSTALLING "SHARROWS" ON MAPLE AVENUE. IT WILL HELP MOTORIST ABIDE BY THE SPEED LIMIT & IT WILL HELP US BE PREPARED FOR THE FUTURE NEEDS OF TRANSPORTATION. MILLENNIALS ARE PRONE TO USING ALTERNATIVE FORMS OF TRANSPORT SUCH AS WALKING BIKING AND SHARED SERVICES AS UBER/LIFT & ZIP BUT SPECIFICALLY BIKING!! MORE BIKE LANES IN RIDGE WOOD PLEASE IT WILL ABSOLUTELY TEMPER DRIVER BEHAVIORS PLEASE ADDRESS ~~MAPLE~~ FRANKLIN AVENUE -

NUMEROUS ACCIDENTS ON EACH INTERSECTION.

When completed, please return back to Michael Dannemiller or return by mail, fax or email to:
The RBA Group - Attn: Michael Dannemiller
7 Campus Drive, Suite 300, Parsippany, NJ 07054
Telephone: (973) 946-5626 Fax: (973) 898-9472
E-mail: mdannemiller@rbagroup.com





APPENDIX C

TAC Meeting Summaries



Memorandum

To: File

From: Mike Dannemiller (RBA) & Pete Kremer (Parsons Brinkerhoff)

Meeting Date: April 30, 2014

Re: Central Bergen Bicycle and Pedestrian Plans – Technical Advisory Committee (TAC) Meeting #1

Attendees: See attached Sign-In Sheet

Meeting Purpose & Goals: *To introduce the project purpose and scope; to solicit and discuss the ideas and perspectives of TAC participants.*

Introductions: Ken Aloisio and Donna Orbach, Bergen County

Project Purpose, Goals & Benefits:

- Make it safer to get around (biking and walking)
- Health benefits
- Less driving = less traffic congestion
- Traffic calming and livability benefits

Project Approach and Process:

- Will not be seeking to expand county park or roads
- Why are we here – 8 towns – home to, or surround Saddle River Park (heartland of Bergen County)
- Will be seeking resolutions of support from each town
- Next summer – pursue (Federal) grants to build any major physical recommendations and will need to include resolutions of support from each municipality
- No pre-conception of recommendations set right now; this project is an “open slate”
- Next TAC meeting ~fall

- The County intends to build a network of Complete Streets throughout the County, expanding on this effort
- Need to bring the public into the process to support data collection and provide local input and priorities

Issues and Opportunities to Investigate:

- Access to and through Saddle River County park and make improvements to local roads
- Saddle River County Park is a regional spine for multi-modal use, but is not intended to be used for high speed bike traffic
- Saddle River County Park is a recreation destination
- Multimodal mobility and safety are top priorities
- Maywood has a Bicycle & Pedestrian Plan (NJDOT funded)

Paramus:

- Paramus Road – high speed issue; Bergen Community College is accessed along Paramus Road (not recommended route for bikes)
- Saddle River Road – similar issues – high speed
- Insufficient pedestrian accommodation at signalized intersections (County jurisdiction) may be a global issue
- Connection to local destinations and businesses are a plus
- Do not want to see substandard/inadequate facilities just to fit something in
- Midland Avenue is a priority corridor

Ridgewood:

- Transit provided bike racks to be installed soon
- Top priority Corridors
 - Grove Street (municipal)
 - Linwood Avenue
 - Ridgewood Avenue (county road – overdue on repaving)
 - All three provide park access
- Utility ROWs could be investigated

Fair Lawn:

- Berdan Avenue has no striping and is very wide (this is an opportunity!) – goes under Rte. 208; railroad underpass is unimproved, very narrow and needs lighting)
- Not all trains stop at Radburn; high speed trains pass by the station (NJ TRANSIT)
- Fair Lawn Avenue is very busy
- Fair Lawn Parkway is very wide
- Saddle River Road at Century/Fair Lawn is an intersection that should be investigated to determine potential issues

Elmwood Park:

- Possibly route along river
- Market Street will be a major corridor (includes a Passaic River crossing)
 - Routing “through town” may be counter-productive; following the River is a preferred route
 - There is a canoe path and the falls to Dundee Dam are a major draw
- NYC on-road bike facilities may be a good example to follow

Rochelle Park:

- There is a freight rail line that is not displayed on the map
- Investigate potential off-road connections at Rochelle Avenue and Railroad Avenue (priority)
- Route could include Essex Street/Market Street/Rochelle Avenue

Glen Rock:

- Make connection to the public pool
- Will bring back input and comments from town officials and professionals
- People had been using the utility ROW as an off-road path, but chains blocking access have been installed along the corridor ~Glen Rock; investigate jurisdiction of the utility corridor (may be PSE&G)
 - The utility ROW crosses streets midblock, which may be an issue should the corridor become available non-motorized access.

Public Meeting Options:

- Rochelle Park, Senior Center, 151 W. Passaic Street (near transit)
- Fair Lawn Community Center (near train station)



CENTRAL BERGEN BICYCLE & PEDESTRIAN PLAN

TAC MEETING -- APRIL 30, 2014

SIGN-IN SHEET

Name (Please Print Clearly)	Organization/Affiliation	E-Mail
Mike Dannemiller	RBA Group	MDannemiller@rbagroup.com
Donna Orbach	Bergen County	dorbach@co.bergen.nj.us
LT. Unnie Pepe	Paramus PD	Upepe@ParamusPolice.org
Doug Greenfeld	NITPA	dgreenfeld@njtpa.org
ADAM STOBE	B/C Div. of Open Space	AStrobel@Co.Bergen.NJ.US
ALAN L. KOENIG	BCDP	AKOENIG@CO. BERGEN. NJ.US
Robert Abbetomarcus	BC Div of Open Space	rabbetomarcus@co.bergen.nj.us
Peter Kremor	Parsons Brinckerhoff	kremor@pbworld.com
JOVAN MEHANDZIC	RIDGEWOOD	JMEHANDZIC@RIDGEWOODNJ.NET
Lisa Swain	Fair Lawn	lswain@fairlawn.org
Andrea Piazza	Fair Lawn	piazzaengineering@att.net
MARK BARONTE	Borough of Glen Rock	mbarone@glenrocknj.net
Robert Davidson	Twp. of Rocher. PK	RobertH.Davidson@openline.net



CENTRAL BERGEN BICYCLE & PEDESTRIAN PLAN

TAC MEETING -- APRIL 30, 2014 SIGN-IN SHEET

Name (Please Print Clearly)	Organization/Affiliation	E-Mail
GLEN PETERSON	Fleming Pk	GLEN.PETERSON@COMcast
Christopher Helms	Bergen Co. Planning	chelms@co.bergen.nj.us.
CHRIS CRUTIS HAUSER		
CRUTIS HAUSER		
RIDGEWOOD NJ		
VILLAGE		
EUBINER.		

CHRIS CRUTIS HAUSER
 CRUTIS HAUSER
 RIDGEWOOD NJ
 VILLAGE
 EUBINER.

Meeting Memorandum

To: Ken Aloisio

CC: Annette Schultz, Peter Kremer, Kristen Ahlfeld

From: Mike Dannemiller, Dan Turner

Date: October 23, 2014

Re: Central Bergen Bicycle and Pedestrian Plans
TAC Meeting #2 held 10/2/2014

The second meeting of the **Technical Advisory Committee** for the Central Bergen Bicycle and Pedestrian Plans project was held as a series of geographically focused meetings. Pairs of municipalities were invited to review project materials in order to focus discussions to each of their specific locations, and yet still gain the benefit of their neighbors. Three meeting times were conducted including:

10:00 am – Maywood and Rochelle Park
11:00am – Elmwood Park and Fairlawn
12:00 noon – Glen Rock and Ridgewood

Paramus and Saddle Brook were invited but not able to attend.

Major findings of each of these targeted meetings follow:

Maywood (Roberta Stern, Administrator)
Rochelle Park (Bob Davidson, Administrator)

1. Maywood Avenue – “Cannot see bikes [be accommodated] on that road”
This is to be repaved in 2015 (County to check on status of paving schedule)
Sidewalks have tree root heaving issues
2. Bergen Town Plaza – some employees are reported to walk to work via crossing Spring Valley Avenue)
3. Pleasant Avenue – has excellent traffic calmed facilities, such as the U-Turn areas and curb extensions
4. Commonly used roads that may have ‘more room to work with’ include
 - Central

- Essex
 - Passaic/ Paramus Road
5. There is significant pedestrian traffic around the garden apartments
 6. The interchange of I-80 presents access conflicts
 7. The Market Street bridge is a challenge for fitting in a sidewalk
 8. The intersection of Rochelle and Railroad is a priority
 9. Lots Lane is a possible access point to the park
 10. Shop rite intersection – pedestrian signal enhancements should be prioritized, possible NO TURN ON RED, Pedestrian Count Down signal heads?
 11. Central Avenue – could there be a Rail with Trail option considered?

Elmwood Park (Lisa Swain, Council Woman & Andrea Piazza, Green Team)
Fairlawn (Glen Pettigano, Councilman)

1. Berdan Aveune – Council approved Shared Lane Markings to be installed
The rail crossing along Berdan Avenue is a conflict area for pedestrians
2. The Borough Engineer is Ken Garrison
3. Elmwood Park is perceived as 22 lanes of major highways
4. River Road – there is a gap in the sidewalk between Willow and Broadway
5. Boulevard is an excellent alternative to other parallel roads, it is very wide
6. 54th may be another possible link to consider
7. Broadway is under NJDOT jurisdiction
8. Morlot Ave at River Road has a memorial for a female police officer who was shot – there is ongoing litigation about this sight
9. Saddle River Road at Fairlawn Avenue – there is on ongoing County project at this intersection
10. Plaza – Berdan Avenue to Fairlawn, may be a candidate for a Road Diet
11. Three rail crossings in Elmwood Park:
 - MolnarDrive
 - Morelot
 - Route 4

Glen Rock (Mark Barrone, Director of Parks and Recreation)
Ridgewood (Chris Rutishauser, Village engineer & a Ridgewood representative)

1. All local roads in Ridgewood have a 25 mph speed limit
2. A Roundabout is proposed along West Saddle River Road at Route 17 and one at Kings Bridge Lane
3. Ridgewood operates the traffic signals, even along County roadways
4. A high priority location for pedestrian enhancements is at the 5 legged intersection at the train station. This has 2 stops, 1 yield and 1 through approach roadways.
5. West Glen Avenue is a priority to connect the existing gap in the sidewalk
6. Hillcrest Ave – the park is ADA accessible, but there is no sidewalk leading to the park. Making this connection is a priority.

7. U-Turns out of the school are an issue along Ackerman by Doremus (in Glen Rock)
8. East Ridgewood ave (scheduled for resurfacing in the next 1 – 2 years) would be a candidate for restricting parking and providing a dedicated bicycle facility to connect the downtown to the park. This could be a bicycle lane striping project.
9. Maple to Railroad, consider using Franklin Ave (jog to the north)

Meeting Memorandum

To: File

CC: Annette Schultz, Peter Kremer, Kristen Ahlfeld

From: Mike Dannemiller, Dan Turner

Date: April 27, 2015

Re: Central Bergen Bicycle and Pedestrian Plans
TAC Meeting #3 held 3/5/2014

The final meeting of the Technical Advisory Committee (TAC) for the Central Bergen Bicycle and Pedestrian Plans was held on Thursday, March 5th, 2015 in the Bergen County Department of Planning offices at One Bergen County Plaza in Hackensack.

TAC members, mayors and clerks from the eight municipalities received invitations and were provided with draft maps of conceptual bicycle routes and pedestrian improvements in their respective municipalities in advance of the meeting, along an overall project description. At this meeting, the concepts were discussed in detail to seek concurrence with the proposed recommendations.

The project team met with groups of two or three municipalities concurrently to focus on specific geographic areas.

10:00 am – Maywood and Rochelle Park
11:00am – Elmwood Park and Fairlawn
12:00 noon – Glen Rock and Ridgewood

The meeting resulted in a set of marked-up maps. As per the direction of the county, recommendations were modified based on the input and priorities expressed by the municipal representatives, as they will be responsible for advancing recommendations for roadways under their jurisdiction. A set of revised maps reflects input from the meeting.



APPENDIX C

Stakeholder Outreach List

APPENDIX C – Stakeholder Outreach List



Central Bergen Bicycle and Pedestrians Plans

The following organizations were contacted to solicit input and invite representative to public meetings.

Organization
Bicycle Touring Club of North Jersey
EZ Ride (formerly Meadowlink)
New York - New Jersey Trail Conference
NJ Transit
New Jersey Department of Transportation
PSE&G
Paramus Chamber of Commerce
3 Paramus malls (Paramus Park, Bergen Town Center, Garden State Plaza)
Bergen Community College (in Paramus)
Elmwood Park Chamber of Commerce
Fair Lawn: River Road Improvement Corporation
Fair Lawn & Elmwood: Broadway Improvement Corporation
Hackensack Regional Chamber of Commerce
Maywood Chamber of Commerce
Rochelle Park Chamber of Commerce
Glen Rock Borough
Ridgewood Village
Fair Lawn Borough
Saddle Brook Township
Elmwood Park Borough
Rochelle Park Township
Maywood Borough
Paramus Borough