

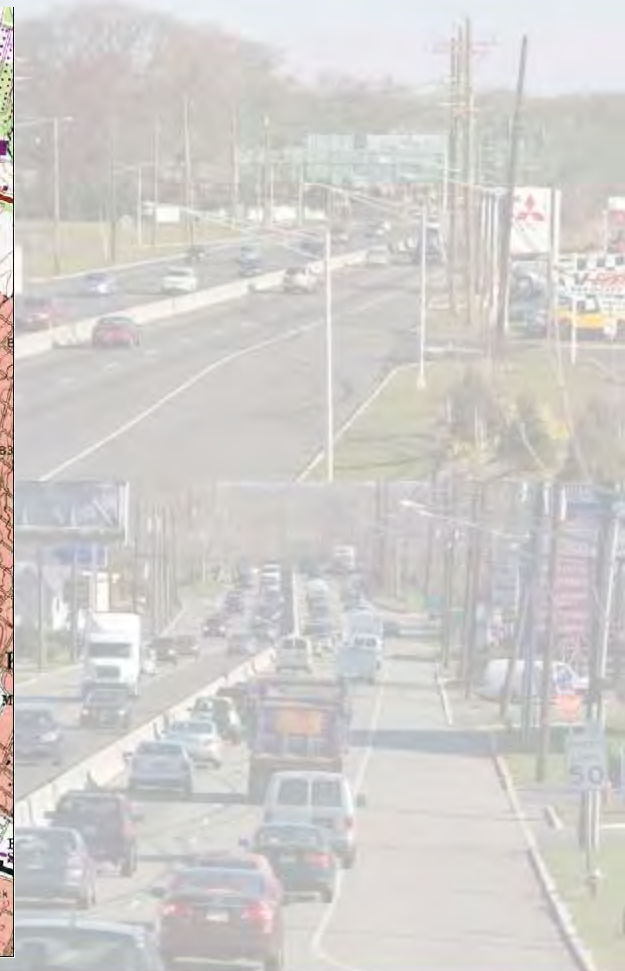
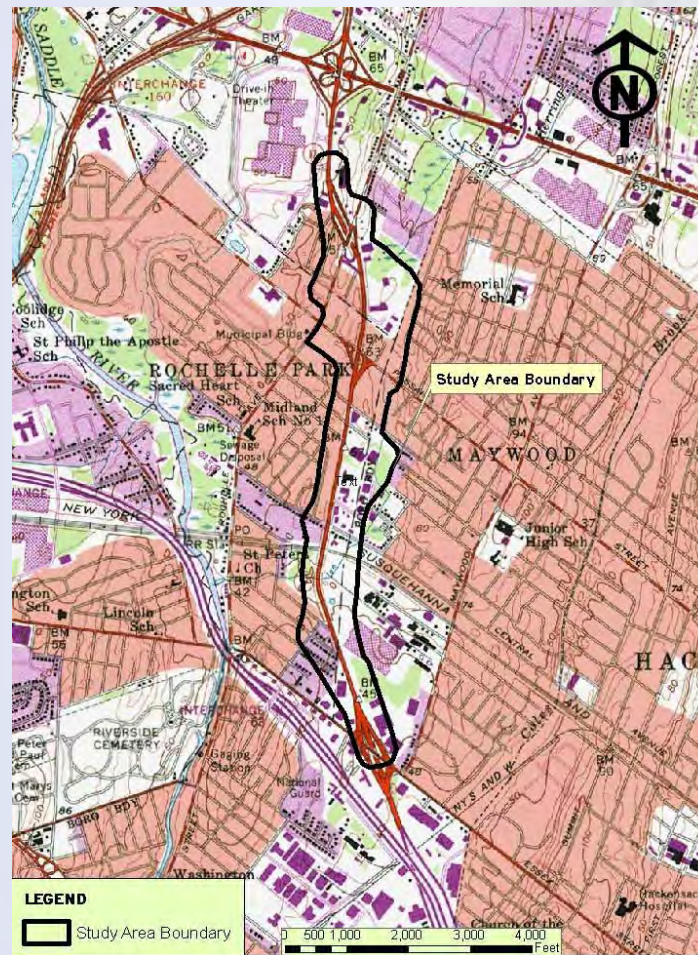
Vision Bergen: Blueprint for Our Future

Route 17 Bottleneck Project Alternatives Analysis and Preliminary Engineering M.P. 10.19 to M.P. 12.04 Maywood, Rochelle Park, and Paramus Bergen County, NJ

Presented By:
André Luboff, P.E.
Senior Project Manager, HNTB Corporation
Tuesday, May 18, 2010



Project Location Plan



Roles of the Route 17 Corridor

- Important through highway serving over 90,000 vpd on the regional network;
- Important link in the regional vehicular freight network;
- Vital land service highway and commercial spine through Bergen County;
- Serves local traffic separated north and south by the NYS&W Railroad right-of-way;
- Driveways and frontage access for local business.



Project History

- Route 17 “Bottleneck” retains its original 80 year old design (two lanes each dir.)
- NJDOT considered improvements nearly 40 years ago – Regional Growth
- Diversions onto local and county roadways diminish Quality of Life
- “Local Rule” Complexities



Recent Improvement Projects

- Reconstruction of Route 17 / Farview Avenue Interchange (late 1990s)
- Reconstruction of Route 4 / Route 17 Interchange (early 2000s)
- Reconstruction of Route 17 / Essex Street Interchange (mid-2000s)
- Other Off-Corridor Measures (Passaic Street / Rochelle Avenue, Garden State Plaza, etc.)



Recent and Ongoing Studies

- Route 17 Needs Assessment / Concept Development Study – 1998 to 2002 (NJDOT)
- Route 17 / Passaic Street Scoping Study – 2001 to 2003 (Bergen County)
- Route 17 / Passaic Street Design Report / Categorical Exclusion Document – 2003 to 2005 (Bergen County)
- Route 17 / Passaic Street Preliminary and Final Design – 2005 to 2007 (Bergen County)
- Route 17 Concept Development / Feasibility Assessment Study (CD/FA) – 2004 to Present (NJDOT)
 - 7.6 mile section between NJ Route 120 and the Garden State Parkway
 - Consideration of “integrated land use” and transportation alternatives
 - Coordinated program of public outreach, design charrettes and visualization local communities.
- Route 17 / Passaic Street “Cost Effective Solutions” – 2007 (NJDOT)



Route 17 Bottleneck Project (December 2008 – Present)

- Bergen County and the NJDOT Working in Partnership
- Building upon information and public outreach derived from earlier studies
- Synthesized program of Alternatives Analysis, Preliminary Engineering, and technical studies
- Expected Preparation of an Environmental Assessment (EA) document meeting State and Federal (NEPA) standards



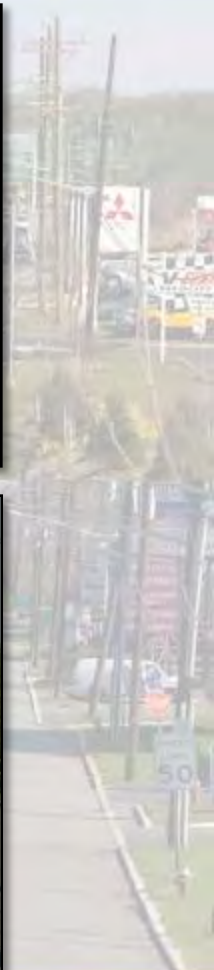
Project Summary to Date

- Current Route 17 Bottleneck Project (Began December 2008); Coordinate / Advance Earlier Studies
- “Screening Process” (May 2009) Recommended Single Alignment with Three (3) Cross-Section Variations
- Initial Meetings with Public Officials (August / September 2009) to Help Guide Studies
- Technical Studies and Analyses began Mid-2009, Nearing Completion
- Second Meetings with Public Officials (Spring 2009); Suggested Further Design Refinements
- As of 4/20/2010 Public Information Center, and Initially Preferred Alternative (IPA) **HAS NOT BEEN SELECTED**; Comments and Issues from Stakeholders



Project Purpose and Need

Alleviate traffic congestion and improve operational reliability along the Route 17 corridor between these limits.



Project Purpose and Need

Improve safety in the project corridor.



Project Purpose and Need

Restore the appropriate functional hierarchy and balance between Route 17 and parallel local and county streets.



Project Purpose and Need

Improve the condition and reliability of the existing corridor infrastructure, including structures, pavements, drainage, and related features.

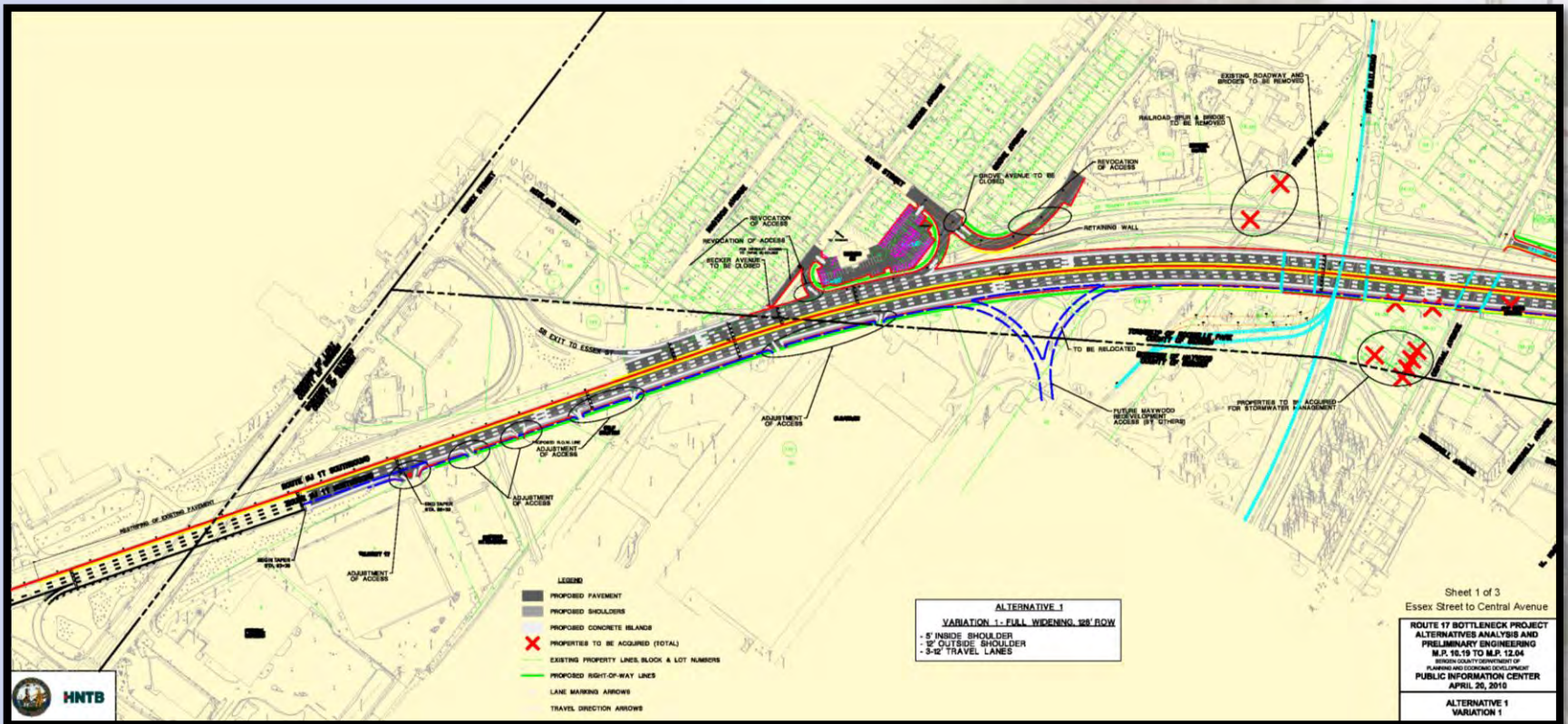


Highlights of Anticipated Improvements

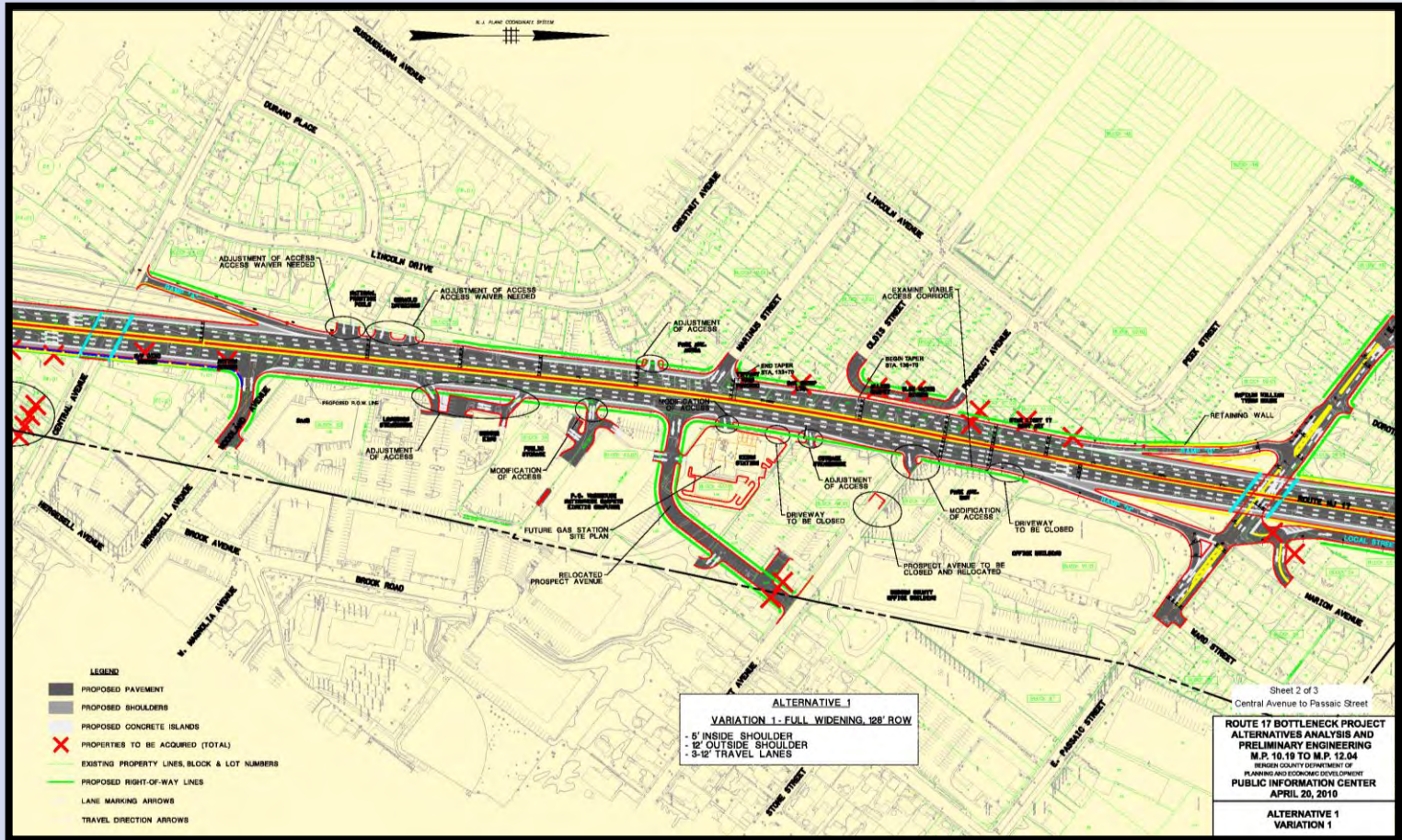
- Additional Lane in Each Direction
- Replacement of Substandard Infrastructure Elements
- Improved Mainline Alignment and Ramp Geometrics
- Considering Cross Sectional Variations to Reduce ROW Impacts
- Optimized Access Design to Serve Remaining Properties
- Allowance for Long-Term Redevelopment
- **MEETS PROJECT PURPOSE AND NEED!!!**



Essex Street to Central Avenue



Central Avenue to Passaic Street



Passaic Street to Garden State Plaza



Forthcoming Efforts

- Completion of Technical Studies; Expected Late Spring 2010
- Circulation of DRAFT Environmental Assessment and Alternatives Analysis Report; Expected Fall 2010
- Recommendation for Initially Preferred Alternative (IPA); Expected Fall 2010
- Stakeholder / Public Review Period; Expected Fall / Winter 2010-2011
- Next Round of Public Involvement / Public Information Center; To Be Determined, Expected Early Winter 2010-2011



Major Considerations

- Funding
- Interagency Coordination
- Right-of-Way Acquisitions and Relocations
- Environmental, especially Socio-Economics
- Hazardous Materials / FUSRAP (Maywood Chemical)
- Utilities
- Construction Impacts (MPT, Community)



Questions?

NOW AVAILABLE!

Visit our Project Website at

<http://www.rt17bottleneckproject.org>

or

<http://www.co.bergen.nj.us/planning>

